

INSTALLATION INFORMATION

SPEC. 2000

CAUTION: Dispensers must be installed with a suitable power-operated pump incorporating a provision for expansion relief which will relieve at pressures not to exceed 50 lbs. per sq. inch. Do not use line check valve between dispenser and power-operated pump unless provided with relief valve. (Remote dispensers only.)

All threaded pipe joints of liquid handling piping must be assembled with Underwriters listed gasoline resistant pipe joint sealing compound. Apply on male threads only.

Note: Installation must be in accordance with the National Electrical Code (NFPA 70), the Automotive and Marine Service Code (NFPA 30A), and all state and local codes.

Note: Impact Safety Valves are to be installed with shear section in line with surface of island within + or - 3/4 inch. Depending on valve to be used, a longer or shorter inlet nipple may be required.

MODEL DESCRIPTIONS:

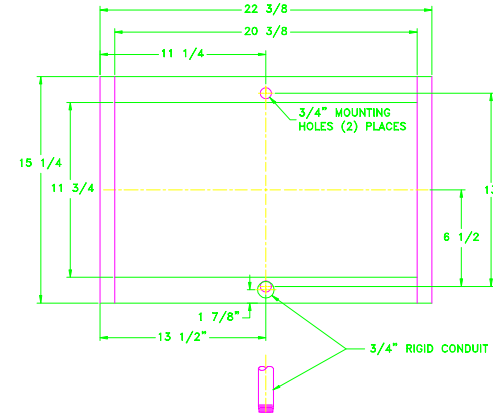
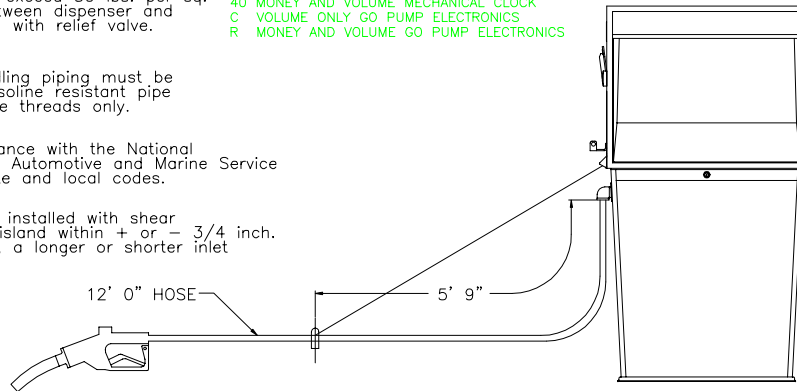
XX12	SINGLE PRODUCT	SINGLE HOSE	REMOTE
XX13	SINGLE PRODUCT	SINGLE HOSE	SELF CONTAINED
XX22	TWO PRODUCT	TWO HOSE	REMOTE
XX24	SINGLE PRODUCT	TWO HOSE	REMOTE
XX25	TWO PRODUCT	TWO HOSE	SELF CONTAINED
XX27	SINGLE PRODUCT	TWO HOSE	SELF CONTAINED

WHERE XX IS
 39 VOLUME ONLY MECHANICAL CLOCK
 40 MONEY AND VOLUME MECHANICAL CLOCK
 C VOLUME ONLY GO PUMP ELECTRONICS
 R MONEY AND VOLUME GO PUMP ELECTRONICS

ELECTRICIAN'S NOTICE

Use only Underwriter's Listed threaded rigid conduit and listed sealing fittings with conductor seals. See wiring diagram for wiring instructions.

NOTICE:
 FIELD CONNECTIONS ARE DONE IN UPPER ELECTRICAL ENCLOSURE. WIRE MUST EXTEND 72" ABOVE BASE OF DISPENSER TO MAKE ELECTRICAL CONNECTIONS.



MODELS

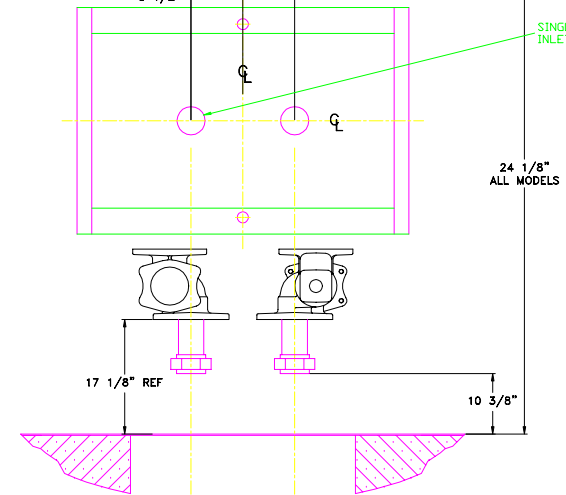
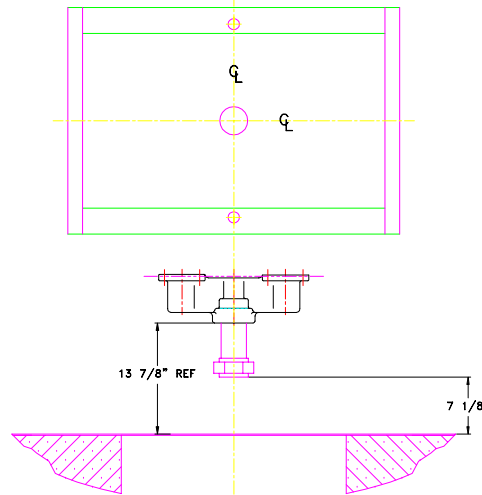
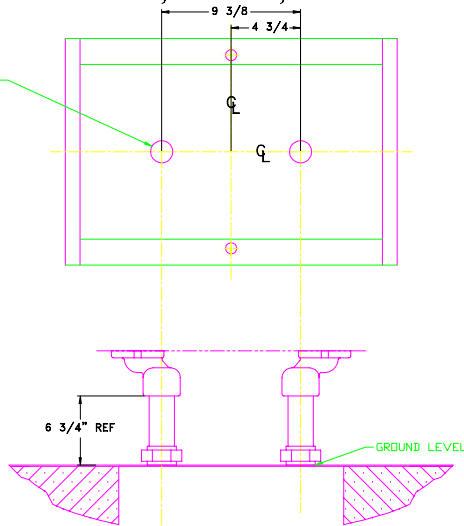
XX13, XX25, XX27

XX24

XX12, XX22

SINGLE PRODUCT INLET LOCATION

SINGLE PRODUCT INLET LOCATION



DANGER: to prevent injury to you from vehicles and onlookers, always place a barricade around this equipment before performing service.

DANGER - FLAMMABLE

Danger: Fire, explosion, injury or death will occur if fuel filter is changed by untrained personnel.

FILTER CHANGE AND STRAINER CLEANING INSTRUCTIONS:

Refer to Operator's manual for detailed instructions

1. Close the emergency valve (also called impact, fire, shear or safety valve) under unit.
2. Turn the pump handle to the ON position. Operate nozzle until no flow. IF FUEL CONTINUES, STOP! DO NOT CHANGE FILTER, CALL FOR SERVICE.
3. Deauthorize unit at console.
4. Turn off circuit breakers for this unit.
5. Turn off circuit breakers for all in-tank submerged pumps.
6. Change the filter or remove and clean the strainer.
7. Put unit back to normal service. Check for leaks.

DANGER - HIGH VOLTAGE

DO NOT INSTALL OR SERVICE THIS EQUIPMENT WITHOUT PROPER TRAINING OR EQUIPMENT

DANGER: To prevent fire or explosion, turn off all power to this equipment and its submerged pump before service or maintenance. More than one disconnect switch or circuit breaker may be required to shut off power to the device.

DANGER: Make sure only trained personnel change filters.

DANGER: To prevent injury, replace and lock all doors when unit is in service.