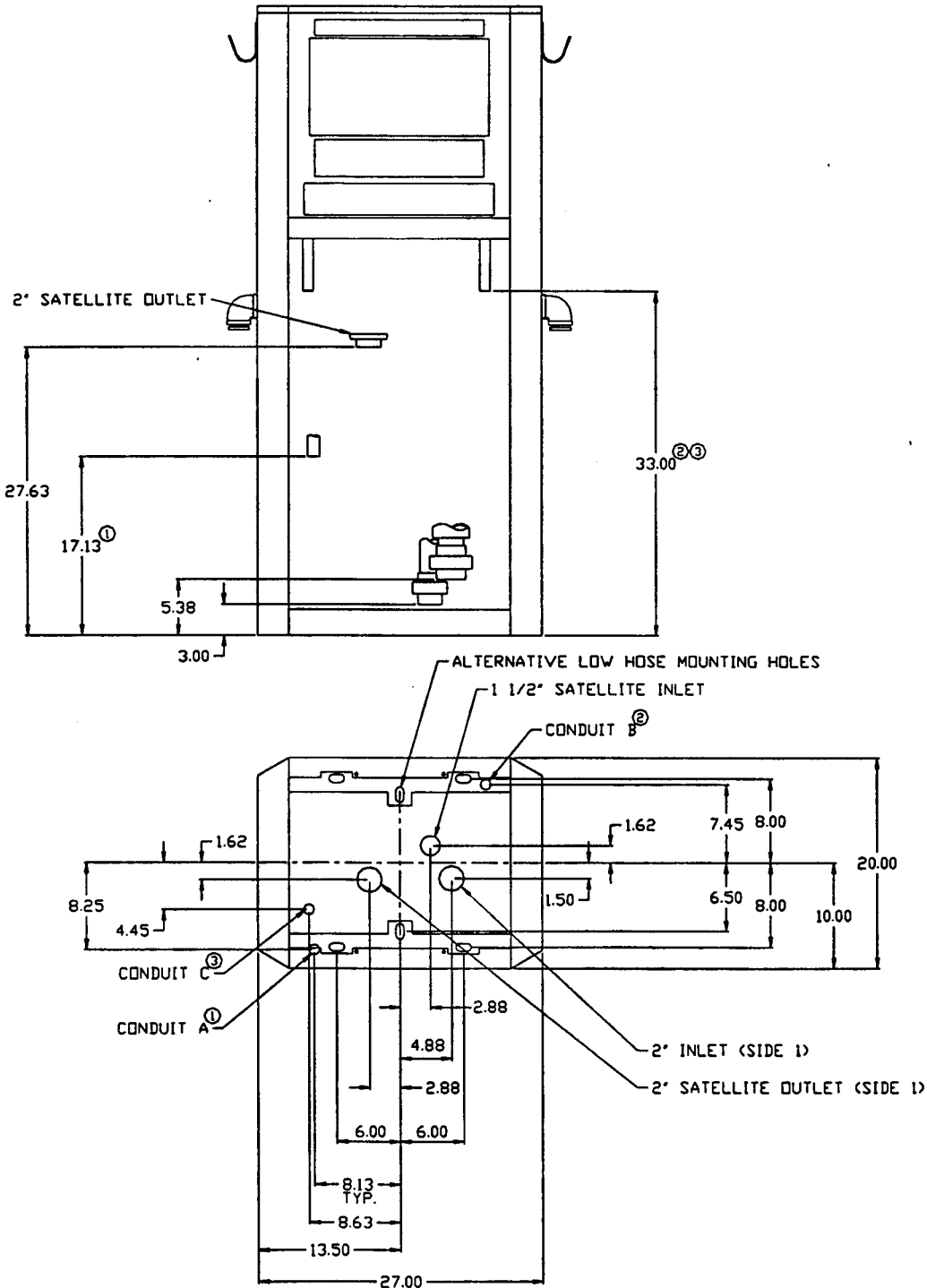


Master/Satellite Combo

NOTES:

- 1) CONDUIT A SUPPLIED AS 3/4" MALE THREAD FOR CONNECTION TO STATION WIRING.
- 2) CONDUIT B SUPPLIED AS 3/4" MALE THREAD FOR SATELLITE TO MASTER CONNECTION.
- 3) CONDUIT C SUPPLIED WITH SATELLITE.
- 4) FORMED CONDUIT SHAPED SIMILAR TO FIG. 13 OF 101073 WILL BE NEEDED FOR FIELD CONNECTION.
- 5) ALL CONDUITS MUST BE POTTED AT TIME OF INSTALATION.



37