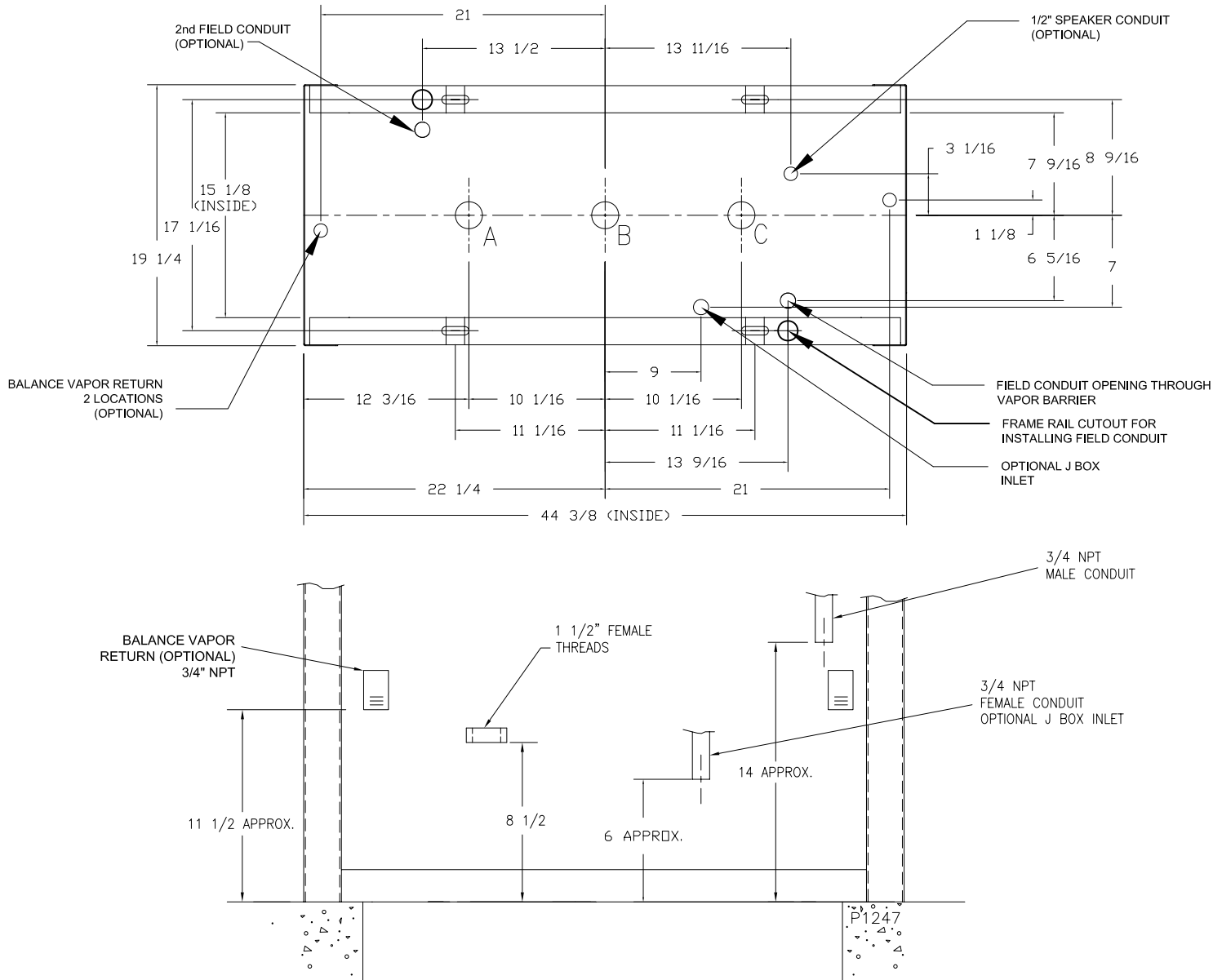


**Dwg #P1247 - Footprint for Pacific 1000 Dispenser Series**

**Refer to Configuration Graphic Sheets to cross reference model numbers with product inlets to be used.**



**CAUTION :** DISPENSERS MUST BE INSTALLED WITH A SUITABLE POWER OPERATED PUMP INCORPORATING A PROVISION FOR EXPANSION RELIEF WHICH WILL RELIEVE AT PRESSURES NOT TO EXCEED 50 LBS. PER SQ. INCH. DO NOT USE LINE CHECK VALVE BETWEEN DISPENSER AND OPERATED PUMP UNLESS PROVIDED WITH RELIEF VALVE.

INLET PIPING SHALL BE A MINIMUM SCHEDULE 40 STEEL PIPE WITH UL LISTED UNION INSTALLED PRIOR TO INSTALLATION INTO THE DISPENSER INLET. ALL JOINTS TO BE MADE USING CLASSIFIED PIPE JOINT SEALING COMPOUND.

THIS UNIT MUST BE ANCHORED TO THE ISLAND WITH A MINIMUM OF 4 BOLTS WITH MINIMUM DIAMETER OF 1/2" THROUGH THE BASE FRAME. DO NOT SHIM MIDDLE OF BASE RAILS TO BOLT DOWN DISPENSER. SHIM ONLY NEAR BOLTS.

**DANGER:** INSTALLATION TO CONFORM TO NATIONAL, STATE AND LOCAL CODES.

**DANGER:** IMPACT SAFETY VALVES ARE TO BE INSTALLED WITH SHEAR SECTION IN LINE WITH SURFACE OF ISLAND TO WITHIN +/- 3/4". DEPENDING ON VALVE TO BE USED A LONGER OR SHORTER INLET NIPPLE MAY BE REQUIRED. INSTALLER MUST SUPPLY 1-1/2" INLET PIPES. THREADED FOR INLET MANIFOLD (NPT THREAD). CUSTOMER TO PROVIDE PIPE, GROUND JOINT UNION, CONDUIT, AND FITTINGS TO ELECTRICAL AND PLUMBING INLETS. USE ONLY UL LISTED RIGID METAL CONDUIT AND UL LISTED SEALING FITTINGS WITH CONDUCTOR SEALS.

**CAUTION:** DISPENSERS MUST BE INSTALLED WITH PROVISIONS FOR EXPANSION RELIEF, WHICH WILL RELIEVE AT PRESSURES NOT EXCEEDING 50 PSI (345 MPA). DO NOT USE LINE CHECK VALVE BETWEEN DISPENSER AND TANK UNLESS PROVIDED WITH RELIEF VALVE.