

# 3000 SERIES

## FOOTPRINT DRAWINGS

For Remote Dispensers & Suction Pumps



**Bennett**  
simply *better*

# TABLE OF CONTENTS

## STANDARD FLOW MODELS

- 3K **High and Low Hose** Standard Flow **Remote** Models ..... 3
- 3K **High and Low Hose** Standard Flow **Suction** Models ..... 4
- 3K **High Hose** Standard Flow **Remote Quad/Active4** Models ..... 5
- 3K **High Hose** Standard Flow **Suction Quad** Models ..... 6

## BIG FUELER MODELS

- 3K **Low Hose** High Flow Big Fueler **Remote Master** Models ..... 7
- 3K **Low Hose** High Flow Big Fueler **Remote Satellite** Models ..... 8
- 3K **High Hose** High Flow Big Fueler **Remote Master** Models ..... 9
- 3K **High Hose** High Flow Big Fueler **Remote Combo** Models ..... 10
- 3K **High Hose** High Flow Big Fueler **Remote Satellite** Models ..... 11
- 3K **High and Low Hose** High Flow Big Fueler **Suction** Models ..... 12

## Footprint for: 3700, 3800, 3900 Models | High Hose and Low Hose | Remote | Standard Flow Rates

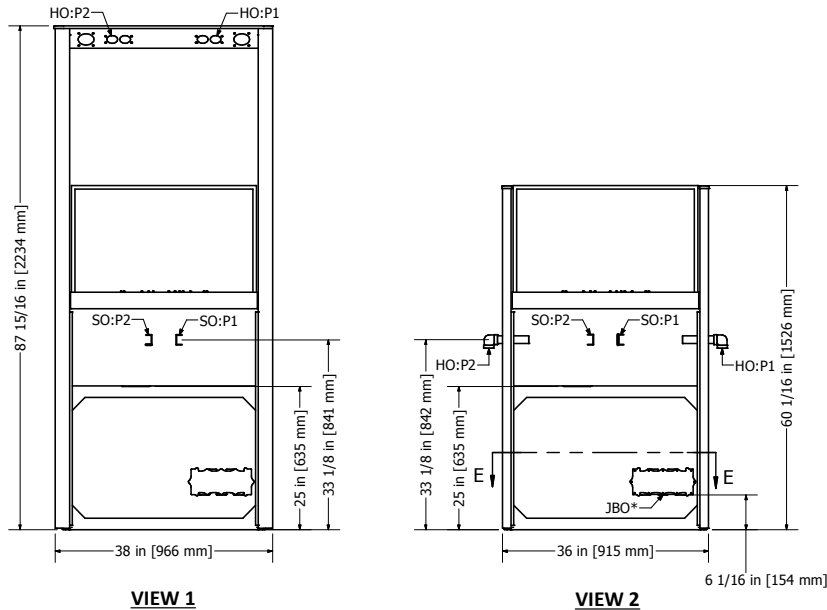
**CAUTION:** Dispensers must be installed with provisions for expansion relief, which will relieve at pressures not to exceed 50 psi (345 mPa). Do not use line check valve between dispenser and tank unless provided with relief valve.

**INSTALLATION NOTES:**

- Inlet piping shall be minimum Schedule 40 steel pipe with UL Listed union installed prior to installation into the dispenser inlet. All joints to be made using the appropriate pipe joint sealing compound classified for the type of fuel used.
- Installation must be in accordance with National Electric Code (NFPA 70), the Automotive and Marine Service Code (NFPA 30A) and all State and Local Codes.
- Impact Safety Valves are to be installed with shear section in line with surface of island within + or - 3/4".
- Use only Underwriters Listed threaded rigid metal conduit and listed sealing fittings for conductor seals.
- Field connections are done in upper electrical enclosure. Wire must extend 72" above base of dispenser to make electrical connections (24" if optional junction box installed).
- Use 1/2" or larger bolts to secure unit to island. High Hose unit must be secured with a minimum of 4 bolts through the base frame. Low Hose units must be secured with a minimum of 2 bolts through the base frame.
- Shims(metal **only**) should only be used under bolts to ensure dispenser is level. Improper shimming that results in misaligned frame is **NOT** covered under the Bennett Limited Warranty.

**BENNETT PUMP COMPANY**

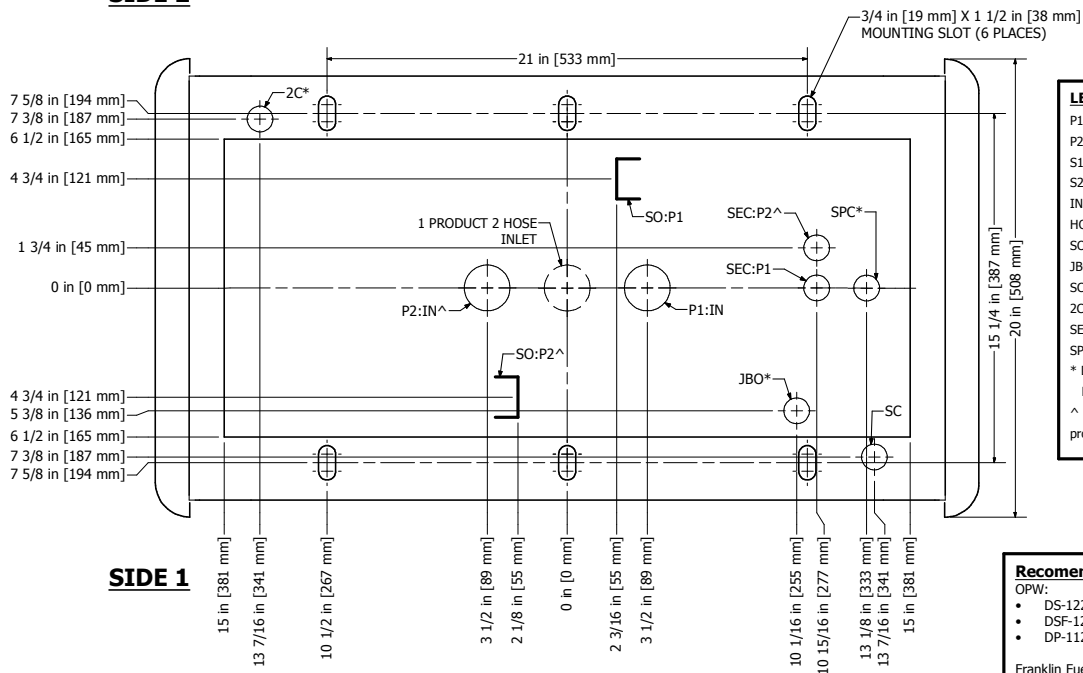
1218 E. Pontaluna Road  
 Spring Lake, MI. 49456  
 Toll Free: 800-235-7618  
 Telephone: 231-798-1310  
 Fax: 231-799-6202  
 www.bennettpump.com  
 Part Number: 135103  
 Drawing Number: P5300  
 Rev Level: A  
 Date: 08/10/17



**NOTES:**

- Subject to change without notice
- Some options not available on all models
- Pump inside pit box opening is 13" X 30"
- Product inlets are female 1-1/2" NPT
- Satellite outlets are female 1" NPT
- Satellite Electrical conduit is 1/2" NPT
- Standard and optional second wiring conduit are 3/4" NPT
- Optional Speaker Conduit is 1/2" NPT
- Hose Outlets are 1" NPT

**SIDE 2**



**LEGEND**

- P1: Product 1
- P2: Product 2
- S1: Side 1
- S2: Side 2
- IN: Inlet
- HO: Hose Outlet
- SO: Satellite Outlet
- JBO: J-Box Outlet
- SC: Standard Conduit
- 2C: Second Conduit
- SEC: Satellite Conduit
- SPC: Speaker Conduit
- \* Designates Optional Feature
- ^ Not present on 1 product models

**Recommended Pit Boxes**

- OPW:
- DS-1229
  - DSF-1229
  - DP-1123
- Franklin Fueling
- LMT 2811
  - LM(M/D) 2811

**SECTION E-E**  
From **VIEW 2**

## Footprint for: 3700, 3800, 3900 Models | High Hose and Low Hose | Suction Standard Flow Rates

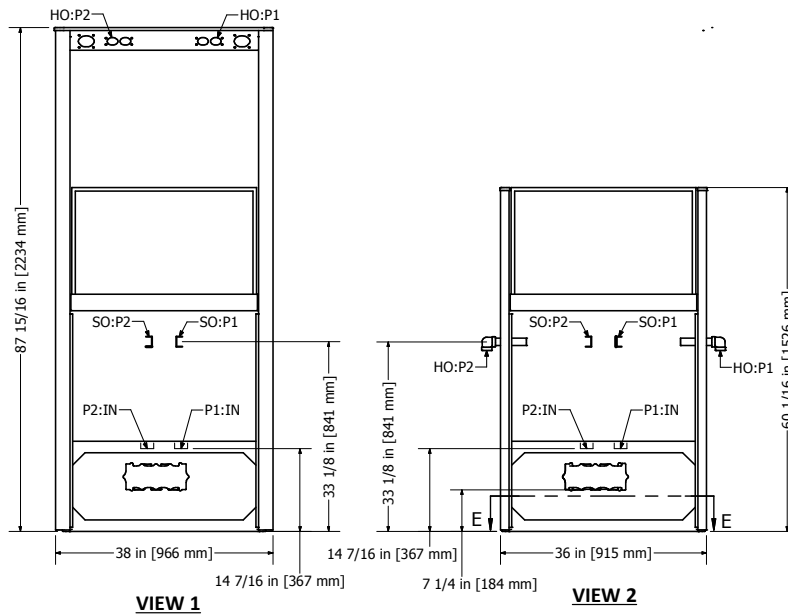
**CAUTION:** Dispensers must be installed with provisions for expansion relief, which will relieve at pressures not to exceed 50 psi (345 mPa). Do not use line check valve between pump and tank unless provided with relief valve.

**INSTALLATION NOTES:**

- a. Recommended inlet piping is minimum Schedule 40 steel pipe with UL Listed union installed prior to installation into the dispenser inlet. All joints to be made using the appropriate pipe joint sealing compound classified for the type of fuel used.
- b. Installation must be in accordance with National Electric Code (NFPA 70), the Automotive and Marine Service Code (NFPA 30A) and all State and Local Codes.
- c. Use only Underwriters Listed threaded rigid metal conduit and listed sealing fittings for conductor seals.
- d. Field connections are done in upper electrical enclosure. Wire must extend 72" above base of dispenser to make electrical connections (24" if optional junction box installed).
- e. Use 1/2" or larger bolts to secure unit to island. High Hose unit must be secured with a minimum of 4 bolts through the base frame. Low Hose units must be secured with a minimum of 2 bolts through the base frame.
- f. Shims (**metal only**) should only be used under bolts to ensure dispenser is level. Improper shimming that results in misaligned frame is **NOT** covered under the Bennett Limited Warranty.

**BENNETT PUMP COMPANY**

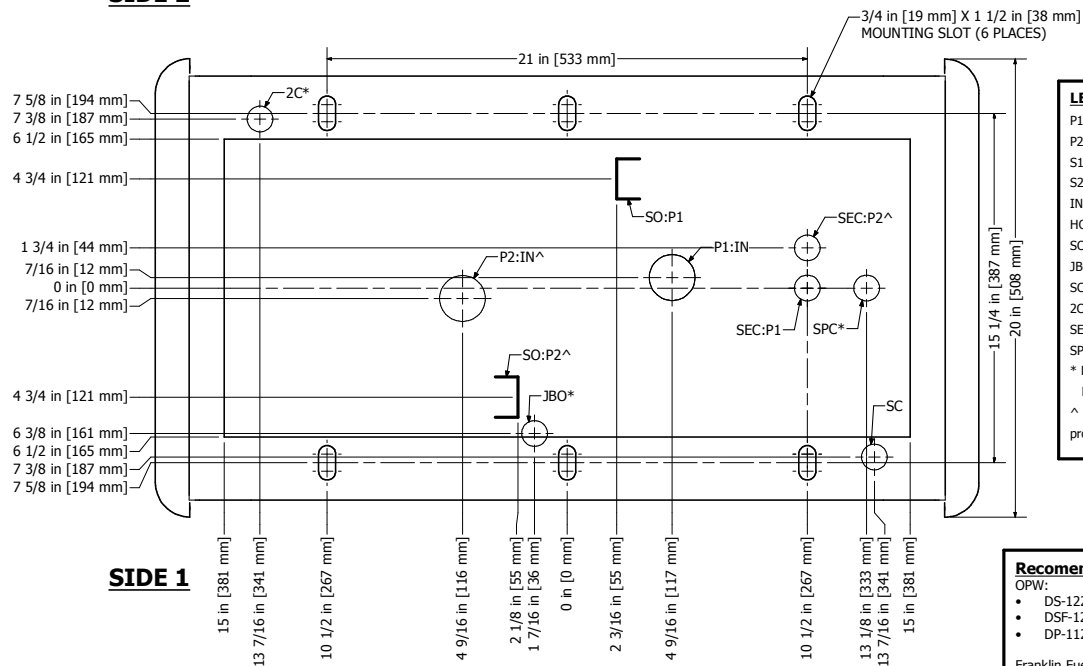
1218 E. Pontaluna Road  
 Spring Lake, MI. 49456  
 Toll Free: 800-235-7618  
 Telephone: 231-798-1310  
 Fax: 231-799-6202  
 www.bennettpump.com  
 Part Number: 135104  
 Drawing Number: P5301  
 Rev Level: A  
 Date: 08/10/17



**NOTES:**

1. Subject to change without notice
2. Some options not available on all models
3. Pump inside pit box opening is 13" X 30"
4. Product inlets are female 1-1/2" NPT
5. Satellite outlets are female 1" NPT
6. Satellite Electrical conduit is 1/2" NPT
7. Standard and optional second wiring conduit are 3/4" NPT
8. Optional Speaker Conduit is 1/2" NPT
9. Hose Outlets are 1" NPT
10. Speaker conduit is shown at flame deck level. Route conduit around motor

**SIDE 2**



**LEGEND**

- P1: Product 1
- P2: Product 2
- S1: Side 1
- S2: Side 2
- IN: Inlet
- HO: Hose Outlet
- SO: Satellite Outlet
- JBO: J-Box Outlet
- SC: Standard Conduit
- 2C: Second Conduit
- SEC: Satellite Conduit
- SPC: Speaker Conduit
- \* Designates Optional Feature
- ^ Not present on 1 product models

**SIDE 1**

**SECTION E-E**  
From VIEW 2

**Recommended Pit Boxes**

- OPW:
- DS-1229
  - DSF-1229
  - DP-1123
- Franklin Fueling:
- LMT 2811
  - LM(M/D) 2811

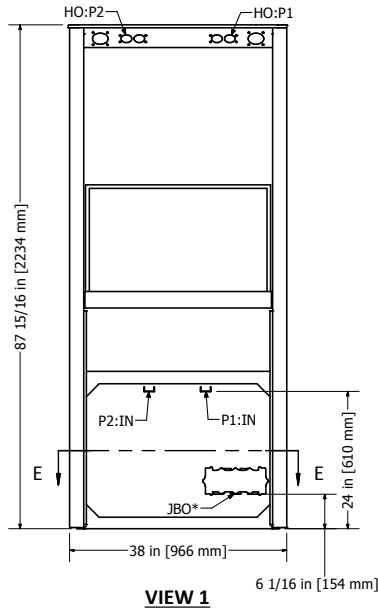
**Footprint for: 3700, 3800, 3900 Models | High Hose | Remote | Quad or Active 4 | Standard Flow Rates**

**CAUTION:** Dispensers must be installed with provisions for expansion relief, which will relieve at pressures not to exceed 50 psi (345 mPa). Do not use line check valve between dispenser and tank unless provided with relief valve.

**INSTALLATION NOTES:**

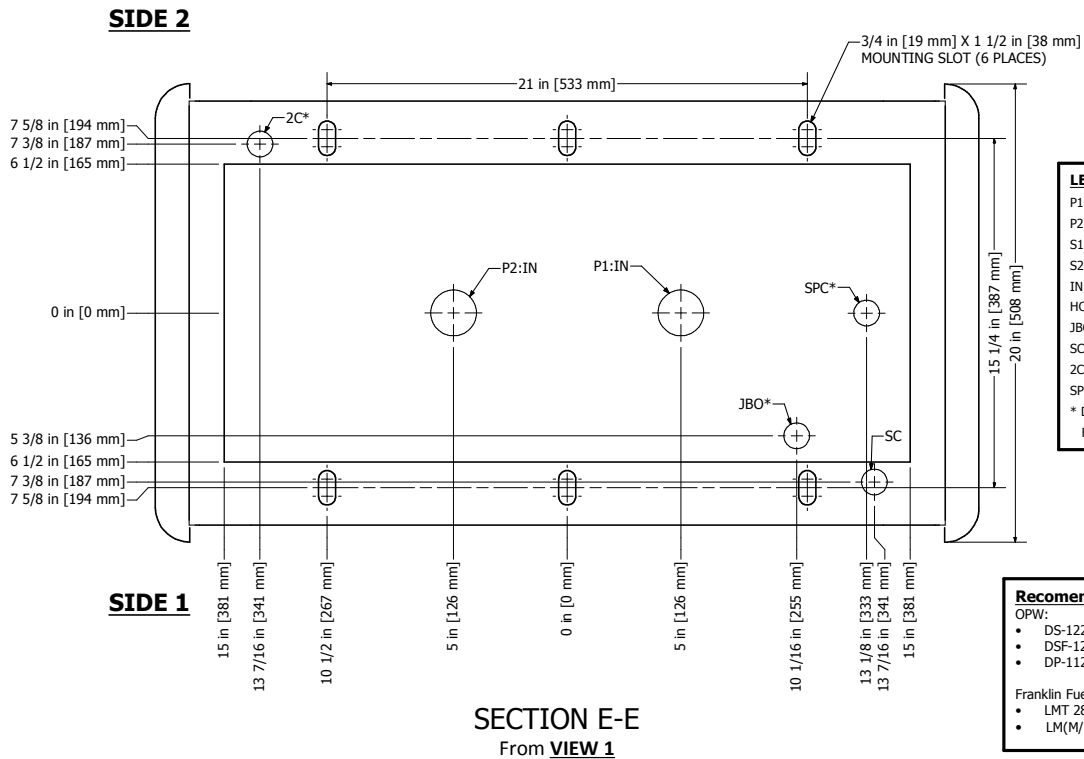
- a. Inlet piping shall be minimum Schedule 40 steel pipe with UL Listed union installed prior to installation into the dispenser inlet. All joints to be made using the appropriate pipe joint sealing compound classified for the type of fuel used.
- b. Installation must be in accordance with National Electric Code (NFPA 70), the Automotive and Marine Service Code (NFPA 30A) and all State and Local Codes.
- c. Impact Safety Valves are to be installed with shear section in line with surface of island within + or - 3/4".
- d. Use only Underwriters Listed threaded rigid metal conduit and listed sealing fittings for conductor seals.
- e. Field connections are done in upper electrical enclosure. Wire must extend 72" above base of dispenser to make electrical connections (24" if optional junction box installed).
- f. Use 1/2" or larger bolts to secure unit to island. High Hose unit must be secured with a minimum of 4 bolts through the base frame. Low Hose units must be secured with a minimum of 2 bolts through the base frame.
- g. Shims(metal **only**) should only be used under bolts to ensure dispenser is level. Improper shimming that results in misaligned frame is **NOT** covered under the Bennett Limited Warranty.

**BENNETT PUMP COMPANY**  
 1218 E. Pontaluna Road  
 Spring Lake, MI. 49456  
 Toll Free: 800-235-7618  
 Telephone: 231-798-1310  
 Fax: 231-799-6202  
 www.bennettump.com  
 Part Number: 135105  
 Drawing Number: P5302  
 Rev Level: A  
 Date: 08/10/17



**NOTES:**

- 1. Subject to change without notice
- 2. Some options not available on all models
- 3. Pump inside pit box opening is 13" X 30"
- 4. Product inlets are female 1-1/2" NPT
- 5. Standard and optional second wiring conduit are 3/4" NPT
- 6. Optional Speaker Conduit is 1/2" NPT
- 7. Hose Outlets are 1" NPT



**LEGEND**  
 P1: Product 1  
 P2: Product 2  
 S1: Side 1  
 S2: Side 2  
 IN: Inlet  
 HO: Hose Outlet  
 JBO: J-Box Outlet  
 SC: Standard Conduit  
 2C: Second Conduit  
 SPC: Speaker Conduit  
 \* Designates Optional Feature

**Recommended Pit Boxes**  
 OPW:  
 • DS-1229  
 • DSF-1229  
 • DP-1123  
 Franklin Fueling  
 • LMT 2811  
 • LM(M/D) 2811

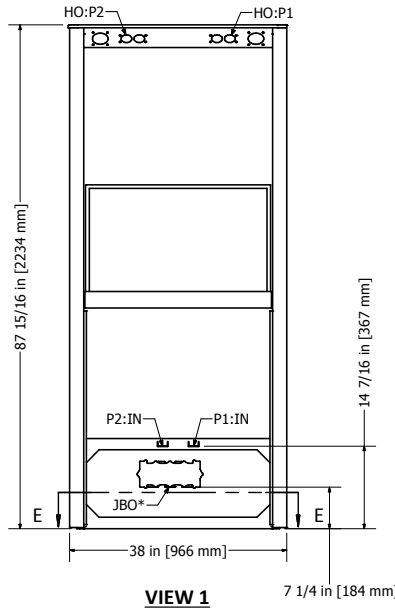
## Footprint for: 3700, 3800, 3900 Models | High Hose | Suction | Quad | Standard Flow Rates

**CAUTION:** Dispensers must be installed with provisions for expansion relief, which will relieve at pressures not to exceed 50 psi (345 mPa). Do not use line check valve between dispenser and tank unless provided with relief valve.

**INSTALLATION NOTES:**

- a. Inlet piping shall be minimum Schedule 40 steel pipe with UL Listed union installed prior to installation into the dispenser inlet. All joints to be made using the appropriate pipe joint sealing compound classified for the type of fuel used.
- b. Installation must be in accordance with National Electric Code (NFPA 70), the Automotive and Marine Service Code (NFPA 30A) and all State and Local Codes.
- c. Impact Safety Valves are to be installed with shear section in line with surface of island within + or - 3/4".
- d. Use only Underwriters Listed threaded rigid metal conduit and listed sealing fittings for conductor seals.
- e. Field connections are done in upper electrical enclosure. Wire must extend 72" above base of dispenser to make electrical connections (24" if optional junction box installed).
- f. Use 1/2" or larger bolts to secure unit to island. High Hose unit must be secured with a minimum of 4 bolts through the base frame. Low Hose units must be secured with a minimum of 2 bolts through the base frame.
- g. Shims(metal **only**) should only be used under bolts to ensure dispenser is level. Improper shimming that results in misaligned frame is **NOT** covered under the Bennett Limited Warranty.

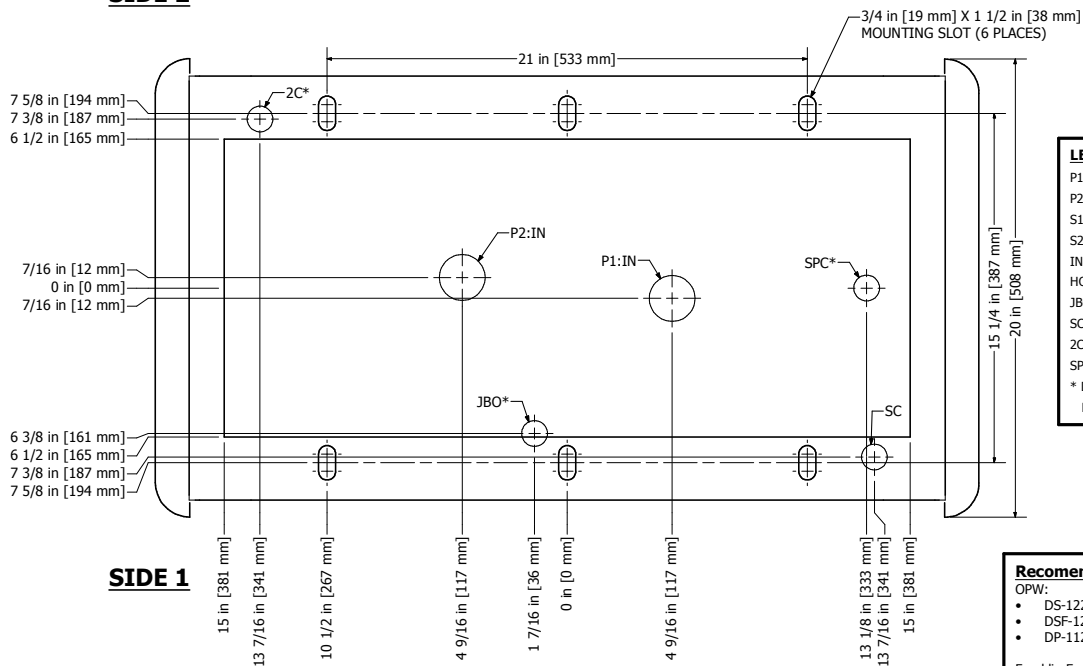
**BENNETT PUMP COMPANY**  
 1218 E. Pontaluna Road  
 Spring Lake, MI. 49456  
 Toll Free: 800-235-7618  
 Telephone: 231-798-1310  
 Fax: 231-799-6202  
 www.bennettump.com  
 Part Number: 135106  
 Drawing Number: P5303  
 Rev Level: A  
 Date: 08/10/17



**NOTES:**

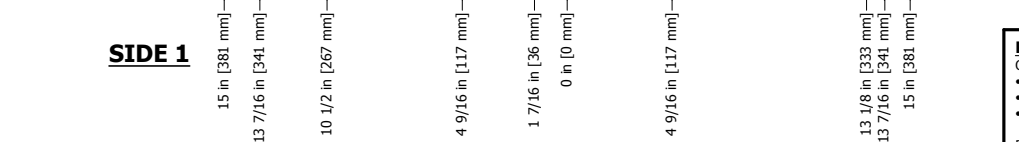
1. Subject to change without notice
2. Some options not available on all models
3. Pump inside pit box opening is 13" X 30"
4. Product inlets are female 1-1/2" NPT
5. Standard and optional second wiring conduit are 3/4" NPT
6. Optional Speaker Conduit is 1/2" NPT
7. Hose Outlets are 1" NPT

**SIDE 2**



**LEGEND**  
 P1: Product 1  
 P2: Product 2  
 S1: Side 1  
 S2: Side 2  
 IN: Inlet  
 HO: Hose Outlet  
 JBO: J-Box Outlet  
 SC: Standard Conduit  
 2C: Second Conduit  
 SPC: Speaker Conduit  
 \* Designates Optional Feature

**SIDE 1**



**SECTION E-E**  
 From **VIEW 1**

**Recommended Pit Boxes**  
 OPW:  
 • DS-1229  
 • DSF-1229  
 • DP-1123  
 Franklin Fueling  
 • LMT 2811  
 • LM(M/D) 2811

## Footprint for: 3700, 3800, 3900 Models | Low Hose | Remote | Master / Combo | High Flow Big Fueler

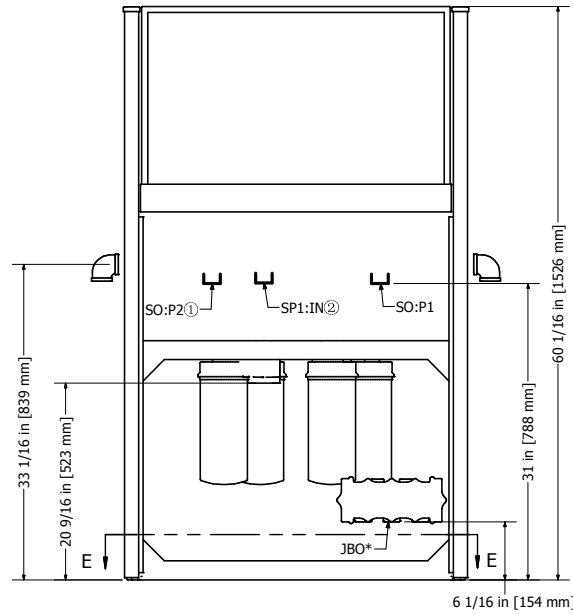
**CAUTION:** Dispensers must be installed with provisions for expansion relief, which will relieve at pressures not to exceed 50 psi (345 mPa). Do not use line check valve between dispenser and tank unless provided with relief valve.

**INSTALLATION NOTES:**

- Inlet piping shall be minimum Schedule 40 steel pipe with UL Listed union installed prior to installation into the dispenser inlet. All joints to be made using the appropriate pipe joint sealing compound classified for the type of fuel used.
- Installation must be in accordance with National Electric Code (NFPA 70), the Automotive and Marine Service Code (NFPA 30A) and all State and Local Codes.
- Impact Safety Valves are to be installed with shear section in line with surface of island within + or - 3/4".
- Use only Underwriters Listed threaded rigid metal conduit and listed sealing fittings for conductor seals.
- Field connections are done in upper electrical enclosure. Wire must extend 72" [1829mm] above base of dispenser to make electrical connections [24" [610mm] if optional junction box installed).
- Use 1/2" or larger bolts to secure unit to island. High Hose unit must be secured with a minimum of 4 bolts through the base frame. Low Hose units must be secured with a minimum of 2 bolts through the base frame.
- Shims(metal **only**) should only be used under bolts to ensure dispenser is level. Improper shimming that results in misaligned frame is **NOT** covered under the Bennett Limited Warranty.

**BENNETT PUMP COMPANY**

1218 E. Pontaluna Road  
Spring Lake, MI. 49456  
Toll Free: 800-235-7618  
Telephone: 231-798-1310  
Fax: 231-799-6202  
www.bennettump.com  
Part Number: 135107  
Drawing Number: P5304  
Rev Level: A  
Date: 08/10/17

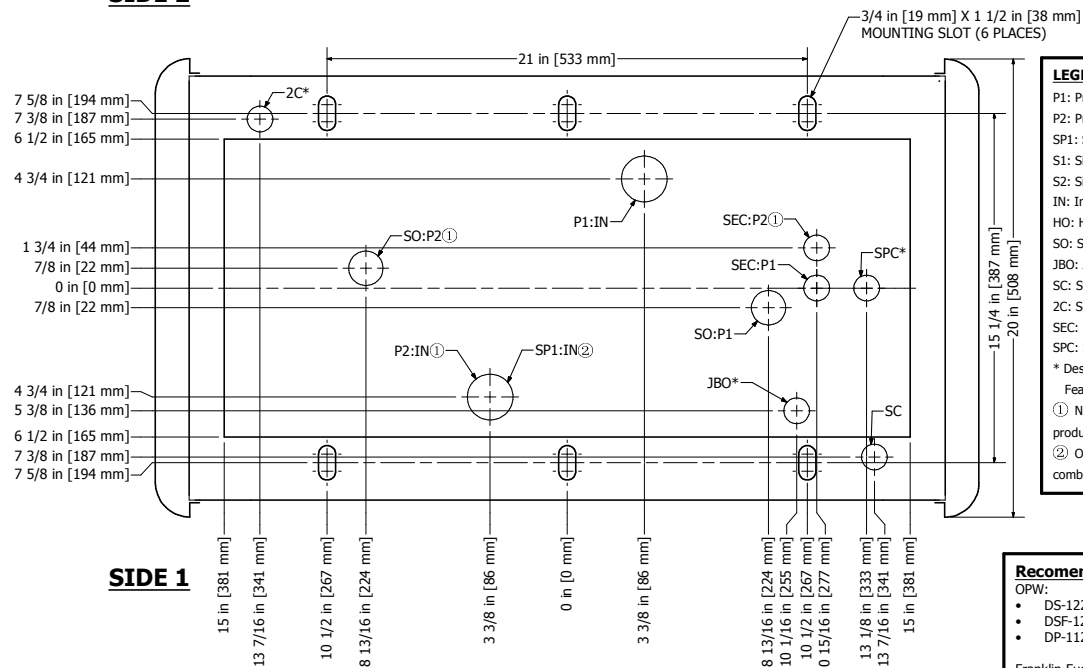


**VIEW 1**

**NOTES:**

- Print and/or Product subject to change without notice
- Some options not available on all models
- Pump inside pit box opening is 13" X 30"
- Master inlets are female 2" NPT
- Satellite Inlets are female 1-1/2" NPT
- Satellite outlets are female 1-1/2" NPT
- Satellite Electrical conduit is 1/2" NPT
- Standard and optional second wiring conduit are 3/4" NPT
- Optional Speaker Conduit is 1/2" NPT
- Hose Outlets are 1-1/4" NPT, customer to supply 1-1/4" to 1" or 3/4" reducer
- Optional J-Box Conduit is 1" Female Conduit Thread
- For Model 3X22BCR (Combo) SP1 is Satellite Inlet from remote master

**SIDE 2**



**SECTION E-E**  
From **VIEW 1**

**LEGEND**

- P1: Product 1
- P2: Product 2
- SP1: Satellite Product 1
- S1: Side 1
- S2: Side 2
- IN: Inlet
- HO: Hose Outlet
- SO: Satellite Outlet
- JBO: J-Box Outlet
- SC: Standard Conduit
- 2C: Second Conduit
- SEC: Satellite Conduit
- SPC: Speaker Conduit
- \* Designates Optional Feature
- ① Not present on 1 product or combo models
- ② Only present on combo models

**Recommended Pit Boxes**

- OPW:**
- DS-1229
  - DSF-1229
  - DP-1123
- Franklin Fueling
- LMT 2811
  - LM(M/D) 2811

## Footprint for: 3700, 3800, 3900 Models | Low Hose | Remote | Satellite | High Flow Big Fueler

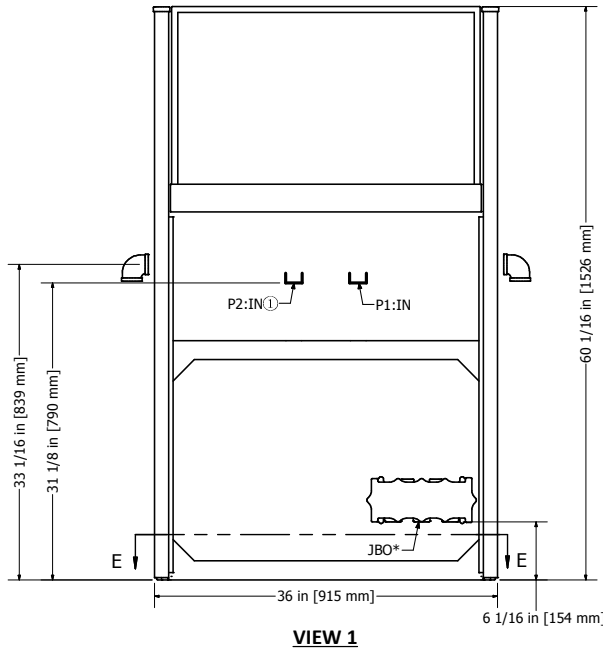
**CAUTION:** Dispensers must be installed with provisions for expansion relief, which will relieve at pressures not to exceed 50 psi (345 mPa). Do not use line check valve between dispenser and tank unless provided with relief valve.

**INSTALLATION NOTES:**

- Inlet piping shall be minimum Schedule 40 steel pipe with UL Listed union installed prior to installation into the dispenser inlet. All joints to be made using the appropriate pipe joint sealing compound classified for the type of fuel used.
- Installation must be in accordance with National Electric Code (NFPA 70), the Automotive and Marine Service Code (NFPA 30A) and all State and Local Codes.
- Impact Safety Valves are to be installed with shear section in line with surface of island within + or - 3/4".
- Use only Underwriters Listed threaded rigid metal conduit and listed sealing fittings for conductor seals.
- Field connections are done in upper electrical enclosure. Wire must extend 72" [1829mm] above base of dispenser to make electrical connections (24" [610mm] if optional junction box installed).
- Use 1/2" or larger bolts to secure unit to island. High Hose unit must be secured with a minimum of 4 bolts through the base frame. Low Hose units must be secured with a minimum of 2 bolts through the base frame.
- Shims(metal **only**) should only be used under bolts to ensure dispenser is level. Improper shimming that results in misaligned frame is **NOT** covered under the Bennett Limited Warranty.

**BENNETT PUMP COMPANY**

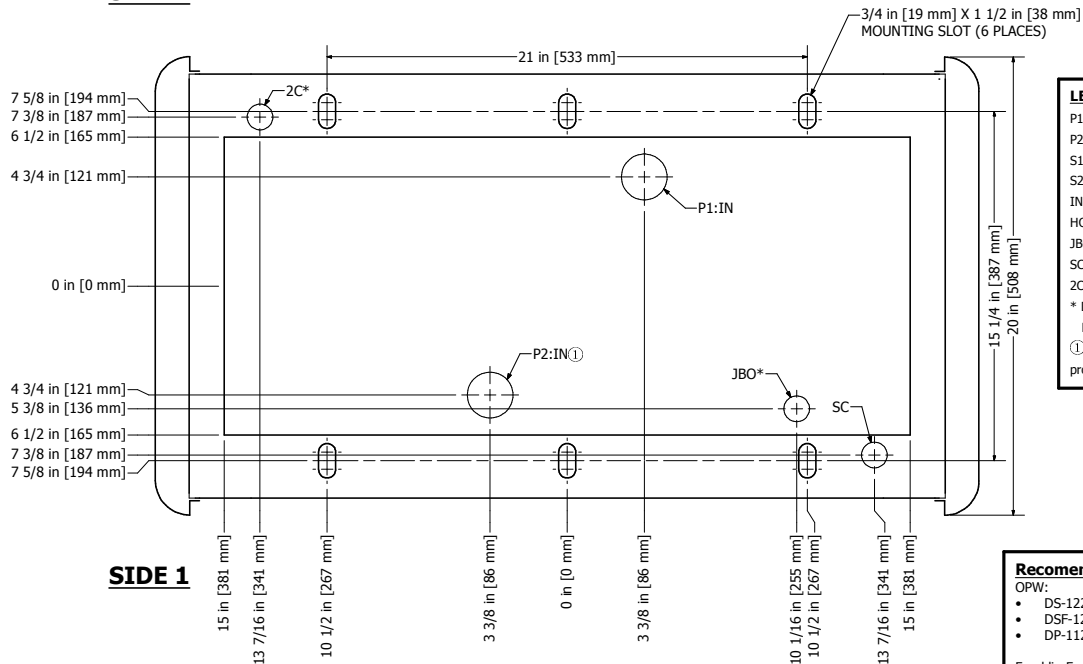
1218 E. Pontaluna Road  
Spring Lake, MI. 49456  
Toll Free: 800-235-7618  
Telephone: 231-798-1310  
Fax: 231-799-6202  
www.bennettpump.com  
Part Number: 135108  
Drawing Number: P5305  
Rev Level: A  
Date: 08/10/17



**NOTES:**

- Print and/or Product subject to change without notice
- Some options not available on all models
- Pump inside pit box opening is 13" X 30"
- Satellite inlets are female 1-1/2" NPT
- Standard and optional second wiring conduit are 3/4" NPT
- Hose Outlets are 1-1/4" NPT, customer to supply 1-1/4" to 1" or 3/4" reducer
- Optional J-Box Conduit is 1" Female Conduit Thread

**SIDE 2**



**LEGEND**

- P1: Product 1
- P2: Product 2
- S1: Side 1
- S2: Side 2
- IN: Inlet
- HO: Hose Outlet
- JBO: J-Box Outlet
- SC: Standard Conduit
- 2C: Second Conduit
- \* Designates Optional Feature
- ① Not present on 1 product models

**SIDE 1**

**SECTION E-E**  
From **VIEW 1**

**Recommended Pit Boxes**

- OPW:
- DS-1229
  - DSF-1229
  - DP-1123
- Franklin Fueling
- LMT 2811
  - LM(M/D) 2811



## Footprint for: 3700, 3800, 3900 Models | High Hose | Remote | Master | High Flow Big Fueler

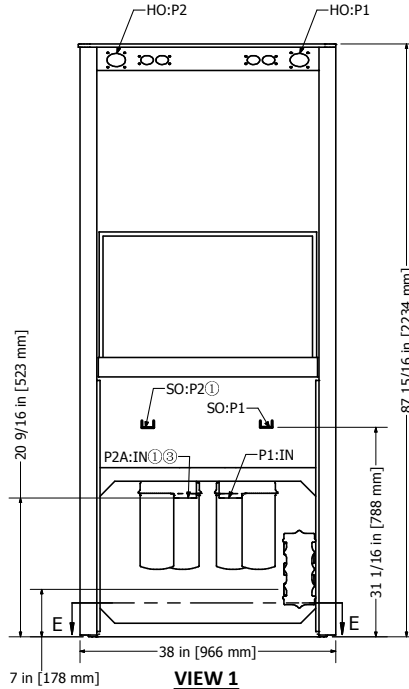
**CAUTION:** Dispensers must be installed with provisions for expansion relief, which will relieve at pressures not to exceed 50 psi (345 mPa). Do not use line check valve between dispenser and tank unless provided with relief valve.

**INSTALLATION NOTES:**

- Inlet piping shall be minimum Schedule 40 steel pipe with UL Listed union installed prior to installation into the dispenser inlet. All joints to be made using the appropriate pipe joint sealing compound classified for the type of fuel used.
- Installation must be in accordance with National Electric Code (NFPA 70), the Automotive and Marine Service Code (NFPA 30A) and all State and Local Codes.
- Impact Safety Valves are to be installed with shear section in line with surface of island within + or - 3/4".
- Use only Underwriters Listed threaded rigid metal conduit and listed sealing fittings for conductor seals.
- Field connections are done in upper electrical enclosure. Wire must extend 72" [1829mm] above base of dispenser to make electrical connections (24" [610mm] if optional junction box installed).
- Use 1/2" or larger bolts to secure unit to island. High Hose unit must be secured with a minimum of 4 bolts through the base frame. Low Hose units must be secured with a minimum of 2 bolts through the base frame.
- Shims(metal **only**) should only be used under bolts to ensure dispenser is level. Improper shimming that results in misaligned frame is **NOT** covered under the Bennett Limited Warranty.

**BENNETT PUMP COMPANY**

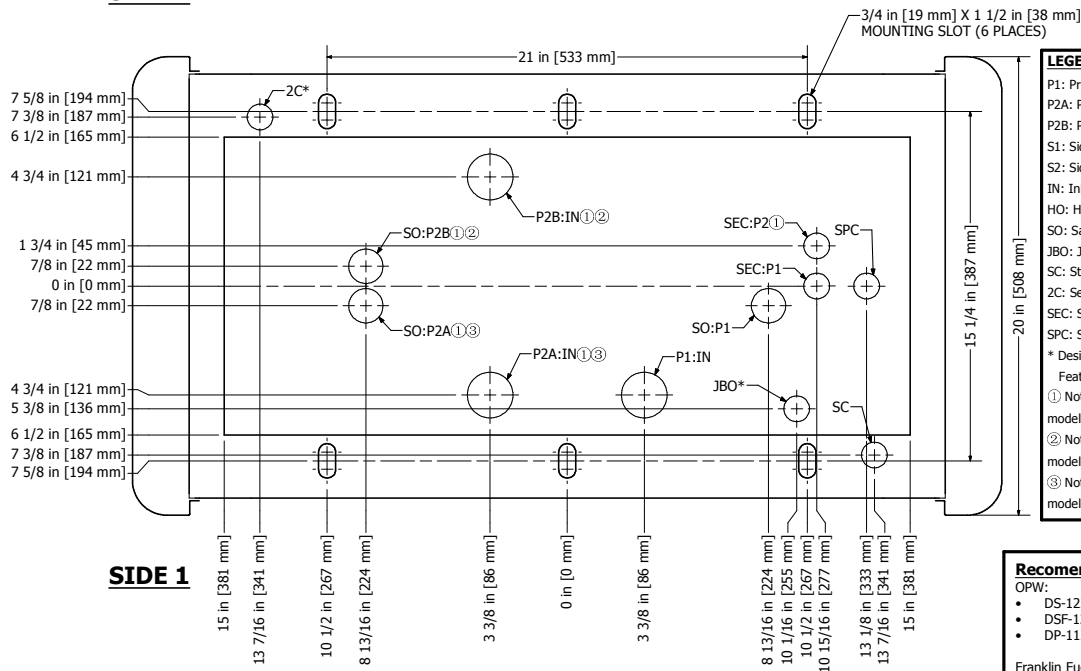
1218 E. Pontaluna Road  
Spring Lake, MI. 49456  
Toll Free: 800-235-7618  
Telephone: 231-798-1310  
Fax: 231-799-6202  
www.bennettump.com  
Part Number: 135110  
Drawing Number: P5307  
Rev Level: A  
Date: 08/10/17



**NOTES:**

- Print and/or Product subject to change without notice
- Some options not available on all models
- Pump inside pit box opening is 13" X 30"
- Master Inlets are female 2" NPT
- Satellite outlets are female 1-1/2" NPT
- Satellite electrical conduit is 1/2" NPT
- Standard and optional second wiring conduit are 3/4" NPT
- Optional J-Box Conduit is 1" Female Conduit Thread
- Hose Outlets are 1-1/4" NPT, customer to supply 1-1/4" to 1" or 3/4" reducer

**SIDE 2**



**LEGEND**

- P1: Product 1
- P2A: Product 2
- P2B: Product 2
- S1: Side 1
- S2: Side 2
- IN: Inlet
- HO: Hose Outlet
- SO: Satellite Outlet
- JBO: J-Box Outlet
- SC: Standard Conduit
- 2C: Second Conduit
- SEC: Satellite Conduit
- SPC: Speaker Conduit
- \* Designates Optional Feature
- ① Not present on 1 product models
- ② Not present on 1 sided models
- ③ Not present on 2 sided models

**SIDE 1**

**SECTION E-E**  
From **VIEW 1**

**Recommended Pit Boxes**

- OPW:**
- DS-1229
  - DSF-1229
  - DP-1123
- Franklin Fueling
- LMT 2811
  - LM(M/D) 2811

## Footprint for: 3700, 3800, 3900 Models | High Hose | Remote | Combo | High Flow Big Fueler

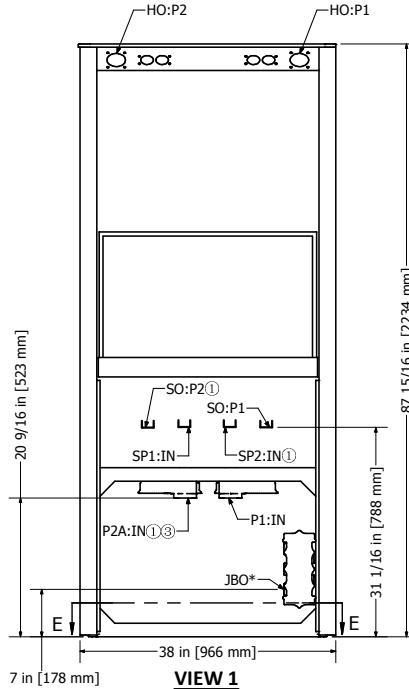
**CAUTION:** Dispensers must be installed with provisions for expansion relief, which will relieve at pressures not to exceed 50 psi (345 mPa). Do not use line check valve between dispenser and tank unless provided with relief valve.

**INSTALLATION NOTES:**

- Inlet piping shall be minimum Schedule 40 steel pipe with UL Listed union installed prior to installation into the dispenser inlet. All joints to be made using the appropriate pipe joint sealing compound classified for the type of fuel used.
- Installation must be in accordance with National Electric Code (NFPA 70), the Automotive and Marine Service Code (NFPA 30A) and all State and Local Codes.
- Impact Safety Valves are to be installed with shear section in line with surface of island within + or - 3/4".
- Use only Underwriters Listed threaded rigid metal conduit and listed sealing fittings for conductor seals.
- Field connections are done in upper electrical enclosure. Wire must extend 72" [1829mm] above base of dispenser to make electrical connections [24" [610mm] if optional junction box installed).
- Use 1/2" or larger bolts to secure unit to island. High Hose unit must be secured with a minimum of 4 bolts through the base frame. Low Hose units must be secured with a minimum of 2 bolts through the base frame.
- Shims(metal **only**) should only be used under bolts to ensure dispenser is level. Improper shimming that results in misaligned frame is **NOT** covered under the Bennett Limited Warranty.

**BENNETT PUMP COMPANY**

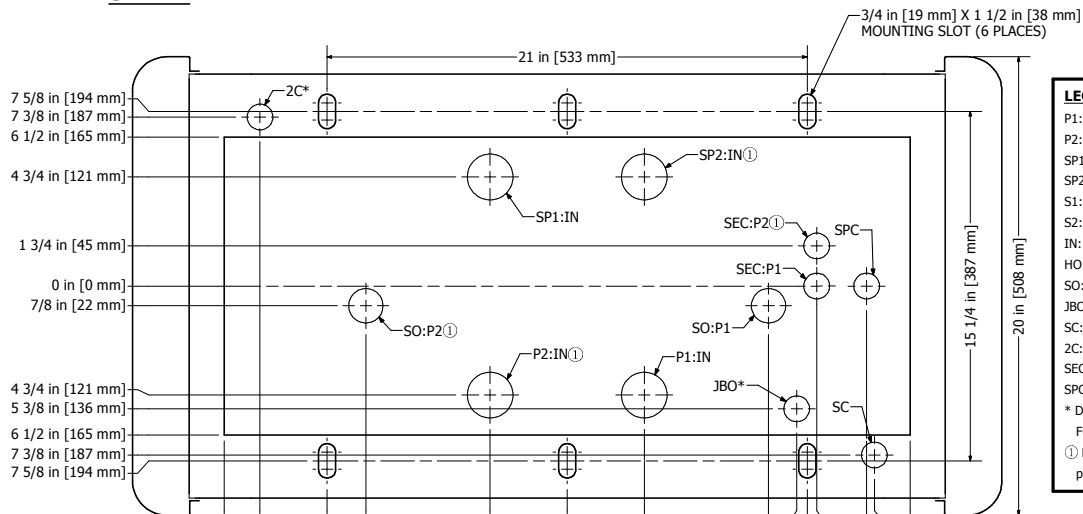
1218 E. Pontaluna Road  
Spring Lake, MI. 49456  
Toll Free: 800-235-7618  
Telephone: 231-798-1310  
Fax: 231-799-6202  
www.bennettpump.com  
Part Number: 135112  
Drawing Number: P5309  
Rev Level: A  
Date: 08/10/17



**NOTES:**

- Print and/or Product subject to change without notice
- Some options not available on all models
- Pump inside pit box opening is 13" X 30"
- Master Inlets are female 2" NPT
- Satellite Inlets are female 1-1/2" NPT
- Satellite outlets are female 1-1/2" NPT
- Satellite electrical conduit is 1/2" NPT
- Standard and optional second wiring conduit are 3/4" NPT
- Optional J-Box Conduit is 1" Female Conduit Thread
- Hose Outlets are 1-1/4" NPT, customer to supply 1-1/4" to 1" or 3/4" reducer

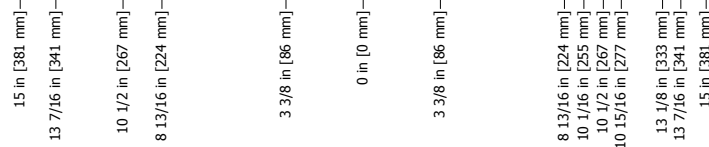
**SIDE 2**



**LEGEND**

- P1: Product 1
- P2: Product 2
- SP1: Satellite Product 1
- SP2: Satellite Product 2
- S1: Side 1
- S2: Side 2
- IN: Inlet
- HO: Hose Outlet
- SO: Satellite Outlet
- JBO: J-Box Outlet
- SC: Standard Conduit
- 2C: Second Conduit
- SEC: Satellite Conduit
- SPC: Speaker Conduit
- \* Designates Optional Feature
- ① Not present on 1 product models

**SIDE 1**



**SECTION E-E**  
From **VIEW 1**

**Recommended Pit Boxes**

- OPW:**
- DS-1229
  - DSF-1229
  - DP-1123
- Franklin Fueling
- LMT 2811
  - LM(M/D) 2811

## Footprint for: 3700, 3800, 3900 Models | High Hose | Remote | Satellite | High Flow Big Fueler

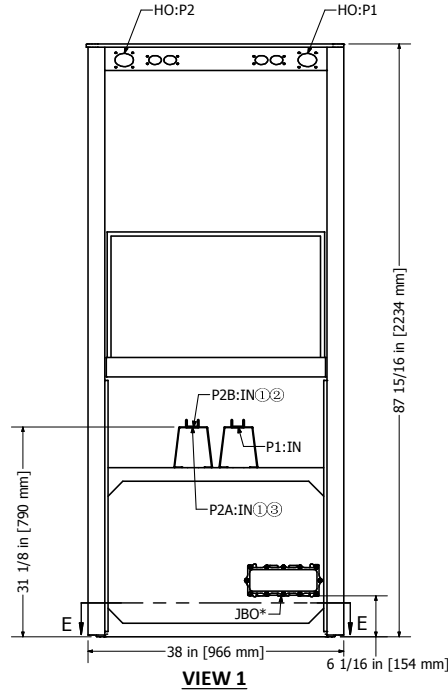
**CAUTION:** Dispensers must be installed with provisions for expansion relief, which will relieve at pressures not to exceed 50 psi (345 mPa). Do not use line check valve between dispenser and tank unless provided with relief valve.

### INSTALLATION NOTES:

- Inlet piping shall be minimum Schedule 40 steel pipe with UL Listed union installed prior to installation into the dispenser inlet. All joints to be made using the appropriate pipe joint sealing compound classified for the type of fuel used.
- Installation must be in accordance with National Electric Code (NFPA 70), the Automotive and Marine Service Code (NFPA 30A) and all State and Local Codes.
- Impact Safety Valves are to be installed with shear section in line with surface of island within + or - 3/4".
- Use only Underwriters Listed threaded rigid metal conduit and listed sealing fittings for conductor seals.
- Field connections are done in upper electrical enclosure. Wire must extend 72" [1829mm] above base of dispenser to make electrical connections (24" [610mm] if optional junction box installed).
- Use 1/2" or larger bolts to secure unit to island. High Hose unit must be secured with a minimum of 4 bolts through the base frame. Low Hose units must be secured with a minimum of 2 bolts through the base frame.
- Shims(metal **only**) should only be used under bolts to ensure dispenser is level. Improper shimming that results in misaligned frame is **NOT** covered under the Bennett Limited Warranty.

### BENNETT PUMP COMPANY

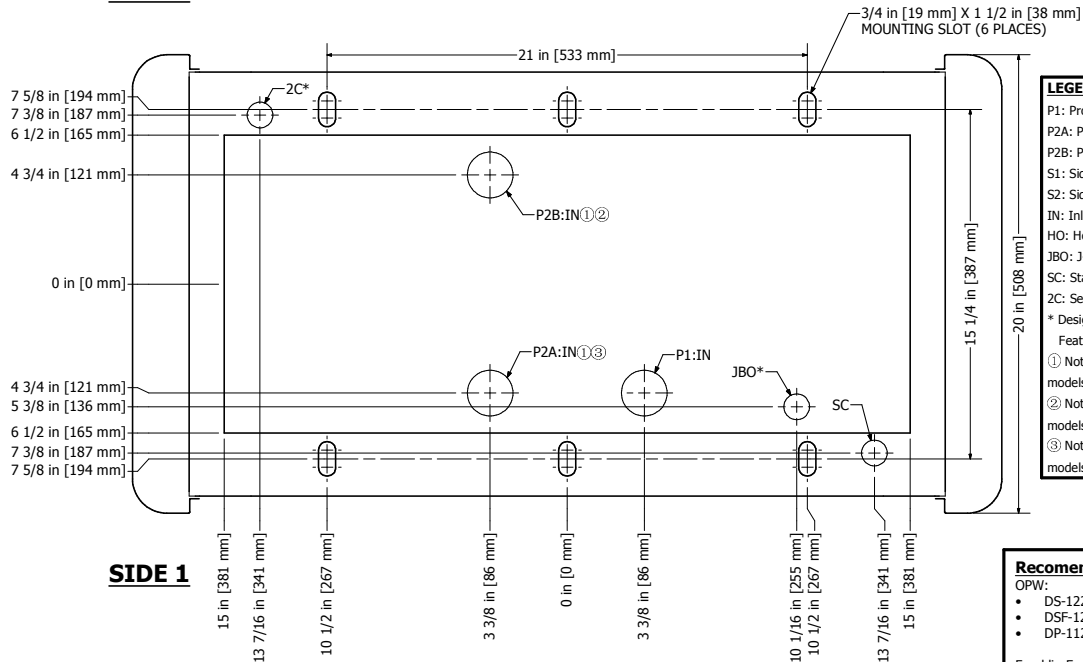
1218 E. Pontaluna Road  
Spring Lake, MI. 49456  
Toll Free: 800-235-7618  
Telephone: 231-798-1310  
Fax: 231-799-6202  
www.bennettpump.com  
Part Number: 135111  
Drawing Number: P5308  
Rev Level: A  
Date: 08/10/17



### NOTES:

- Print and/or Product subject to change without notice
- Some options not available on all models
- Pump inside pit box opening is 13" X 30"
- Satellite inlets are female 1-1/2" NPT
- Standard and optional second wiring conduit are 3/4" NPT
- Hose Outlets are 1-1/4" NPT, customer to supply 1-1/4" to 1" or 3/4" reducer
- Optional J-Box Conduit is 1" Female Conduit Thread

### SIDE 2



### LEGEND

- P1: Product 1 from Master
- P2A: Product 2 from Master
- P2B: Product 2 from Master
- S1: Side 1
- S2: Side 2
- IN: Inlet
- HO: Hose Outlet
- JBO: J-Box Outlet
- SC: Standard Conduit
- 2C: Second Conduit
- \* Designates Optional Feature
- ① Not present on 1 product models
- ② Not present on 1 sided models
- ③ Not present on 2 sided models

### SIDE 1

### SECTION E-E From VIEW 1

### Recommended Pit Boxes

- OPW:
- DS-1229
  - DSF-1229
  - DP-1123
- Franklin Fueling
- LMT 2811
  - LM(M/D) 2811

## Footprint for: 3700, 3800, 3900 Models | High Hose and Low Hose | Suction High Flow Big Fueler

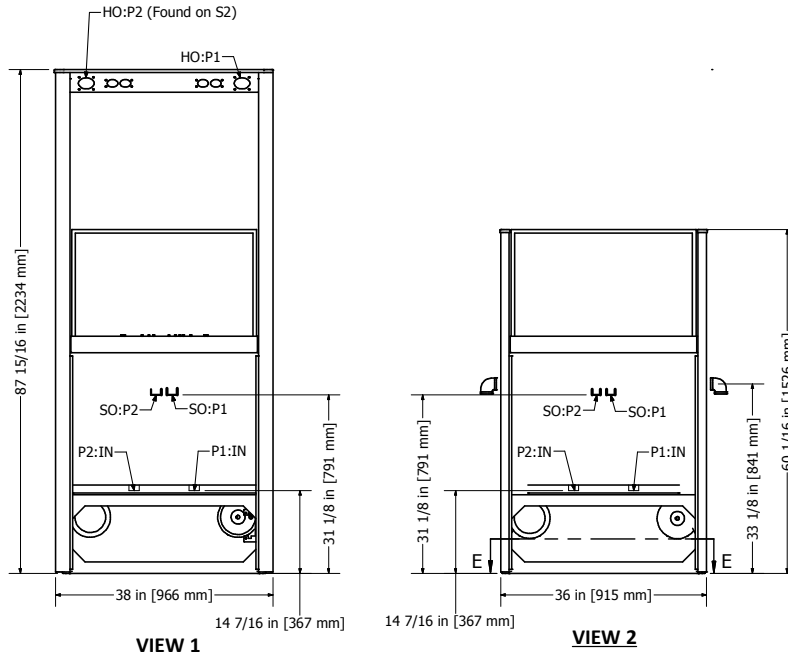
**CAUTION:** Dispensers must be installed with provisions for expansion relief, which will relieve at pressures not to exceed 50 psi (345 mPa). Do not use line check valve between pump and tank unless provided with relief valve.

**INSTALLATION NOTES:**

- Recommended inlet piping is minimum Schedule 40 steel pipe with UL Listed union installed prior to installation into the dispenser inlet. All joints to be made using the appropriate pipe joint sealing compound classified for the type of fuel used.
- Installation must be in accordance with National Electric Code (NFPA 70), the Automotive and Marine Service Code (NFPA 30A) and all State and Local Codes.
- Use only Underwriters Listed threaded rigid metal conduit and listed sealing fittings for conductor seals.
- Field connections are done in upper electrical enclosure. Wire must extend 72" above base of dispenser to make electrical connections.
- Use 1/2" or larger bolts to secure unit to island. High Hose unit must be secured with a minimum of 4 bolts through the base frame. Low Hose units must be secured with a minimum of 2 bolts through the base frame.
- Shims (**metal only**) should only be used under bolts to ensure dispenser is level. Improper shimming that results in misaligned frame is **NOT** covered under the Bennett Limited Warranty.

**BENNETT PUMP COMPANY**

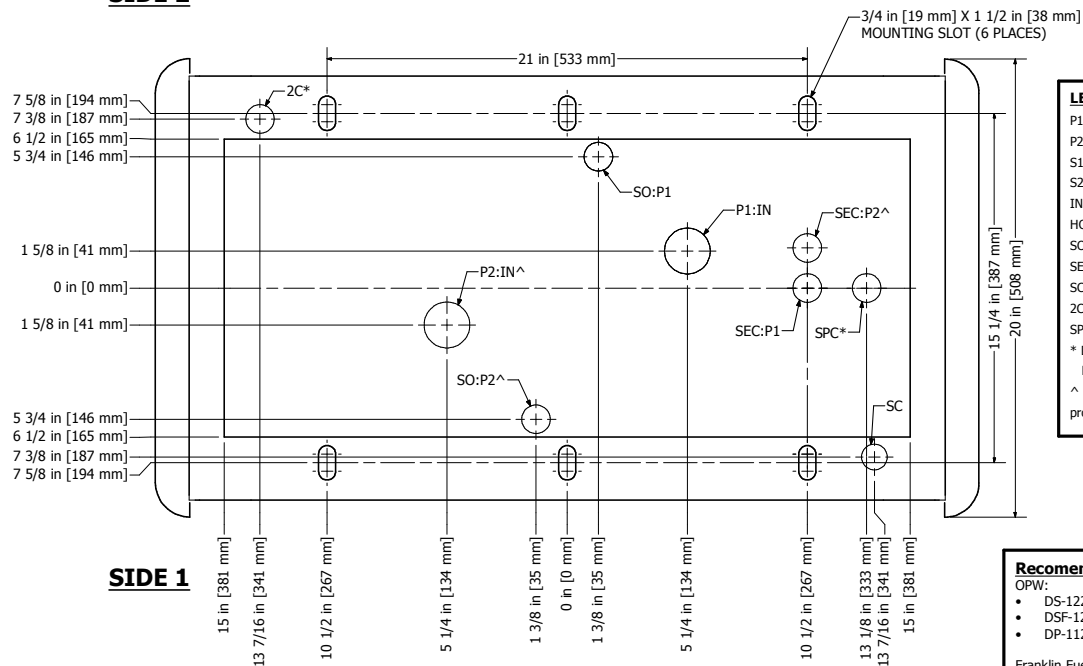
1218 E. Pontaluna Road  
Spring Lake, MI. 49456  
Toll Free: 800-235-7618  
Telephone: 231-798-1310  
Fax: 231-799-6202  
www.bennettpump.com  
Part Number: 135109  
Drawing Number: P5306  
Rev Level: A  
Date: 08/10/17



**NOTES:**

- Subject to change without notice
- Some options not available on all models
- Pump inside pit box opening is 13" X 30"
- Product inlets are female 1-3/4" NPT
- Satellite outlets are female 1-1/2" NPT
- Satellite Electrical conduit is 1/2" NPT
- Standard and optional second wiring conduit are 3/4" NPT
- Optional Speaker Conduit is 1/2" NPT
- Hose Outlets are 1" NPT
- Speaker conduit is shown at flame deck level. Route conduit around motor

**SIDE 2**



**LEGEND**

- P1: Product 1
- P2: Product 2
- S1: Side 1
- S2: Side 2
- IN: Inlet
- HO: Hose Outlet
- SO: Satellite Outlet
- SEC: Satellite Conduit
- SC: Standard Conduit
- 2C: Second Conduit
- SPC: Speaker Conduit
- \* Designates Optional Feature
- ^ Not present on 1 product models

**SIDE 1**

**SECTION E-E**  
From **VIEW 2**

**Recommended Pit Boxes**

- OPW:
- DS-1229
  - DSF-1229
  - DP-1123
- Franklin Fueling:
- LMT 2811
  - LM(M/D) 2811