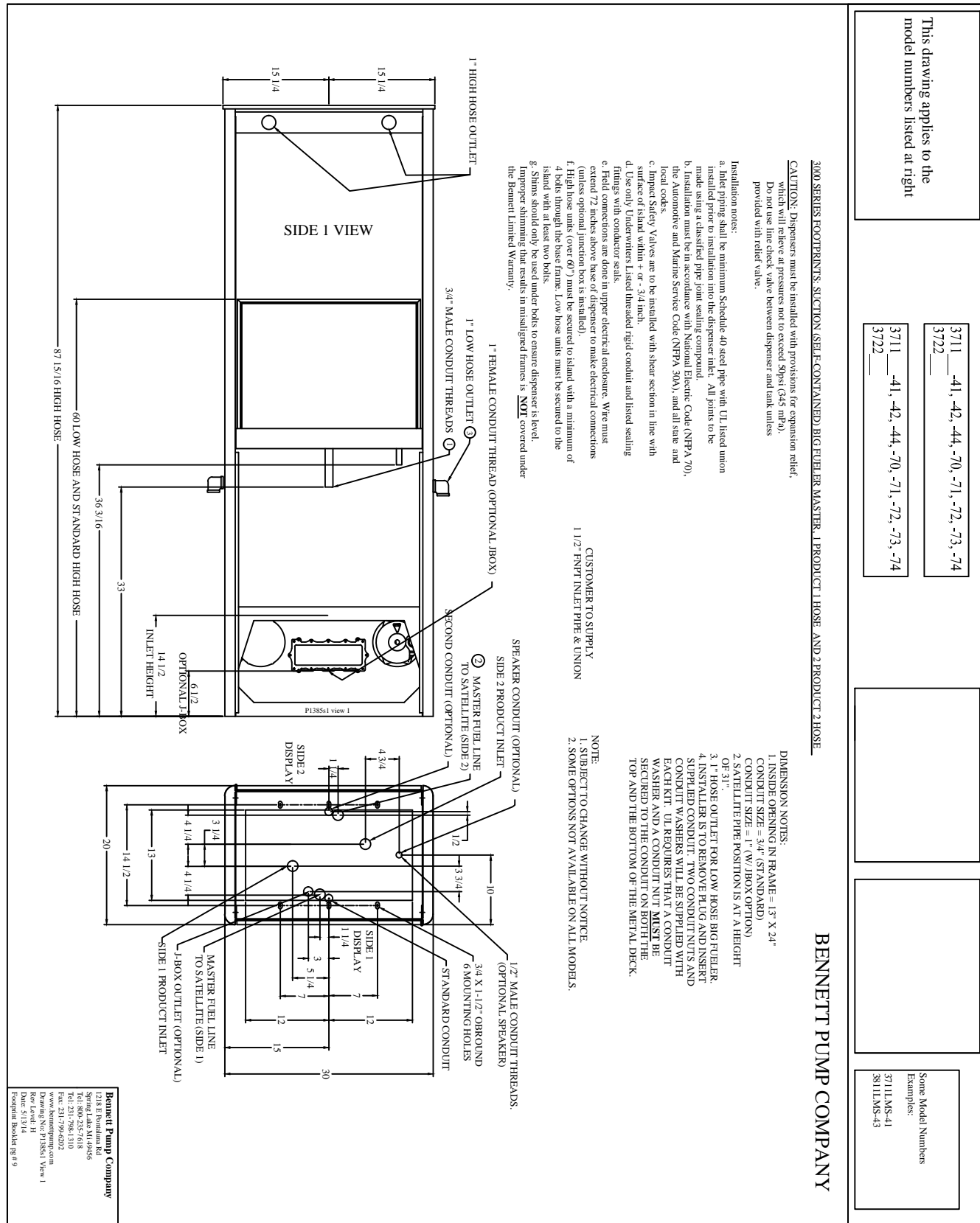


### 3000 Series Footprint Big Fueler - Self Contained Master

Note: Installer must print the Installation and Operators Manuals from the enclosed CD ROM and read and understand the Installation and Operating Instructions before Installation



This drawing applies to the model numbers listed at right

- 3711 -41, -42, -44, -70, -71, -72, -73, -74
- 3722
- 3711 -41, -42, -44, -70, -71, -72, -73, -74
- 3722

#### Notes For Self-Contained Power Wiring Diagram

- All wiring must be installed and used in accordance with the national electrical code (NFPA #70, Automotive and marine service code NFPA #30A), state and local electrical codes.
- All wiring gauge is minimum required, stranded wire with THHN insulation must be used. Do not reuse old wire from an existing installation.
- Do not use PVC conduit. Use only rigid metal conduit.
- Pull a Green 12 ga. stranded THHN ground wire through the junction box and wiring trough and secure at grounding post near the terminal strip in the dispenser's electrical enclosure. Terminate the other end at the main electrical service panel ground bar. Do not terminate at the neutral bar of a sub-panel or rely on metal conduit for this ground connection. Each dispenser's grounding post must be within 1 ohm resistance to earth ground potential. Do not use wire nuts on ground circuits, use only compression type connectors. This is required to initiate Bennett's Limited Warranty.

5. Electronic power must be a dedicated circuit. The dispenser is factory wired to accept either 115 VAC or 230 VAC for its operation and may not be changed in the field. (attempting to do this will void the Bennett Limited Warranty) Electronic power for all dispensers at the installation must be wired to the same AC line phase or damage will result to the dispensers.

6. Use 20 Amp neutral breaking circuit breakers which are supplied by the customer.  
Breaker Identification:  
CB #1 Electronic Power - Hot for electronic power is 115 VAC except for export codes which are 230 VAC.  
CB #3 Pump motor product A.  
Note: No more than 2 dispensers per breaker. Only 1 dispenser motor per breaker for pump motor circuit.

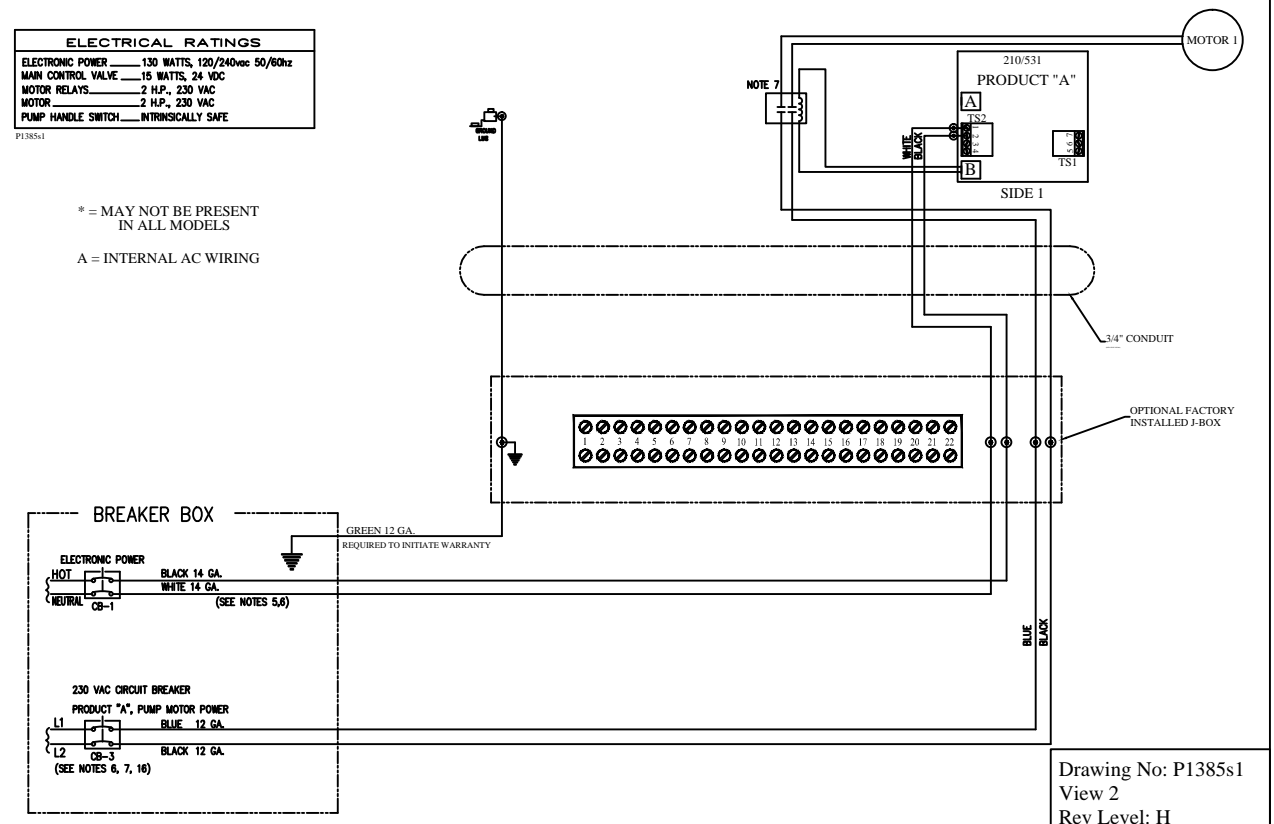
7. Motors are single voltage (230 VAC). On runs longer than 100 ft use 10ga wire, on runs longer than 200 ft use 8 ga wire.

8. Field connection = ⓧ

#### BIG FUELER SELF CONTAINED MODELS AC POWER & MOTOR CONNECTIONS FOR 3000 SERIES SELF CONTAINED PUMPS WITH 210 OR 531 ELECTRONICS

ELECTRICAL RATINGS	
ELECTRONIC POWER	130 WATTS, 120/240vac 50/60hz
MAIN CONTROL VALVE	15 WATTS, 24 VDC
MOTOR RELAYS	2 H.P., 230 VAC
MOTOR	2 H.P., 230 VAC
PUMP HANDLE SWITCH	INTRINSICALLY SAFE

\* = MAY NOT BE PRESENT IN ALL MODELS  
A = INTERNAL AC WIRING



Drawing No: P1385s1  
View 2  
Rev Level: H  
Date 5/1314

### 3000 Series Footprint Big Fueler - Satellite

Note: Installer must print the Installation and Operators Manuals from the enclosed CD ROM and read and understand the Installation and Operating Instructions before Installation

This drawing applies to the model numbers listed at right

3811	3822	Some Model Numbers Examples:
___-59, -60	___-61, -62, -63, -64,	3811 SR-59 3822 SR-62

**3000 SERIES FOOTPRINTS, BIG FUELER SATELLITE/SATELLITE, REMOTE, 2 PRODUCT, 2 HOSE OR SATELLITE, 1 PRODUCT, 1 HOSE**

CAUTION: Dispensers must be installed with provisions for expansion relief, which will relieve at pressures not to exceed 59psi (345 mPa). Do not use line check valve between dispenser and tank unless provided with relief valve.

Installation notes:  
 a. Inlet piping shall be minimum Schedule 40 steel pipe with UT listed union installed prior to installation into the dispenser inlet. All joints to be made using a classified pipe joint sealing compound.  
 b. Installation must be in accordance with National Electric Code (NFPA 70), the Automotive and Marine Service Code (NFPA 30A), and all state and local codes.  
 c. Impact Safety Valves are to be installed with shear section in line with the hose.  
 d. The only Underwriters Listed threaded rigid conduit and listed sealing fittings with conductors seals.  
 e. Field connections are done in upper electrical enclosure. Wire must extend 72 inches above base of dispenser to make electrical connections (unless optional junction box is installed).  
 f. High hose units (over 60") must be secured to island with a minimum of 4 high hose units (over 60") must be secured to island with a minimum of 4 high hose units (over 60") must be secured to the island with at least two bolts.  
 g. Slits should only be used under bolts to ensure dispenser is level.  
 h. Improper slitting that results in misaligned frames is **NOT** covered under the Bennett Limited Warranty.

**BENNETT PUMP COMPANY**

Some Model Numbers Examples:  
3811 SR-59  
3822 SR-62

UN-OBS  
ECN 18900  
SAL  
(9-1-10)

**3000 SERIES FOOTPRINTS, BIG SQUIRT/LITTLE SQUIRT, 3 PRODUCT, 4 HOSE, MASTER, REMOTE**

Units with 4 Master meters and hose:  
 Side 1 has 2 inlets into 2 meters and 2 satellite outlets. Side 2 has 1 inlet into 2 meters and no satellite outlets.

CAUTION: Dispensers must be installed with provisions for expansion relief, which will relieve at pressures not to exceed 59psi (345 mPa). Do not use line check valve between dispenser and tank unless provided with relief valve.

Installation notes:  
 a. Inlet piping shall be minimum Schedule 40 steel pipe with UT listed union installed prior to installation into the dispenser inlet. All joints to be made using a classified pipe joint sealing compound.  
 b. Installation must be in accordance with National Electric Code (NFPA 70), the Automotive and Marine Service Code (NFPA 30A), and all state and local codes.  
 c. Impact Safety Valves are to be installed with shear section in line with the hose.  
 d. The only Underwriters Listed threaded rigid conduit and listed sealing fittings with conductors seals.  
 e. Field connections are done in upper electrical enclosure. Wire must extend 72 inches above base of dispenser to make electrical connections (unless optional junction box is installed).  
 f. High hose units (over 60") must be secured to island with a minimum of 4 high hose units (over 60") must be secured to the island with at least two bolts.  
 g. Slits should only be used under bolts to ensure dispenser is level.  
 h. Improper slitting that results in misaligned frames is **NOT** covered under the Bennett Limited Warranty.

**BENNETT PUMP COMPANY**

Some Model Numbers Examples:  
3711 PR-57  
3722 PR-52

OBS  
ECN 18719  
DG  
(5-19-10)

Big Squirt or Little Squirt Master 3 product, 4 Hose

**Bennett Pump Company**  
 1218 E. Paulsboro Rd.  
 Paulsboro, NJ 08058  
 Tel: 201-798-1100  
 Fax: 201-798-6202  
 E-mail: sales@bennettpump.com  
 Drawing No: P13852, View 3  
 Issued: 10/10/09  
 Issued by: [Signature]  
 Issued for: [Signature]