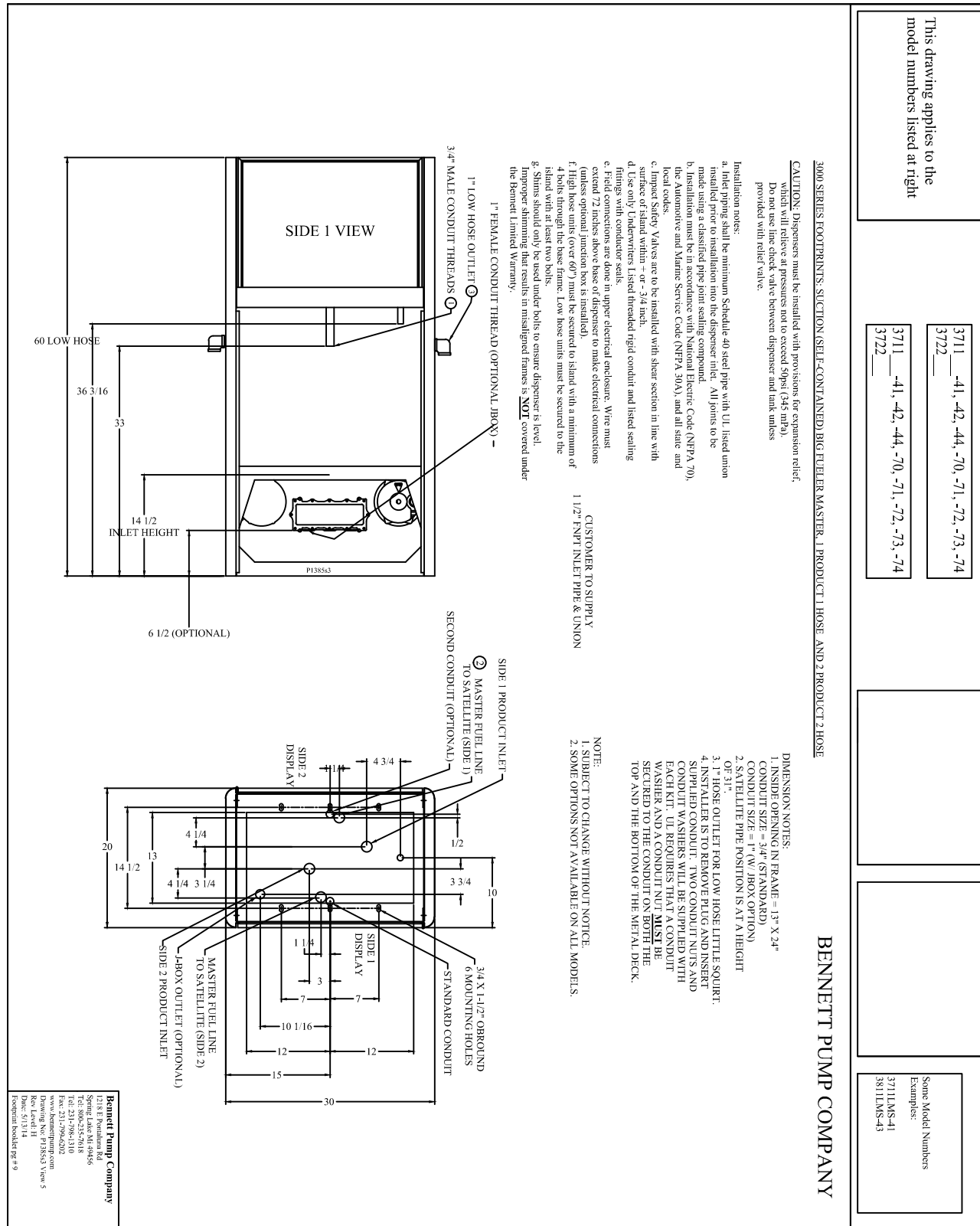


3000 Series Footprint Big Fueler - Low Hose Self Contained Master

Note: Installer must print the Installation and Operators Manuals from the enclosed CD ROM and read and understand the Installation and Operating Instructions before Installation



Notes For Self-Contained Power Wiring Diagram

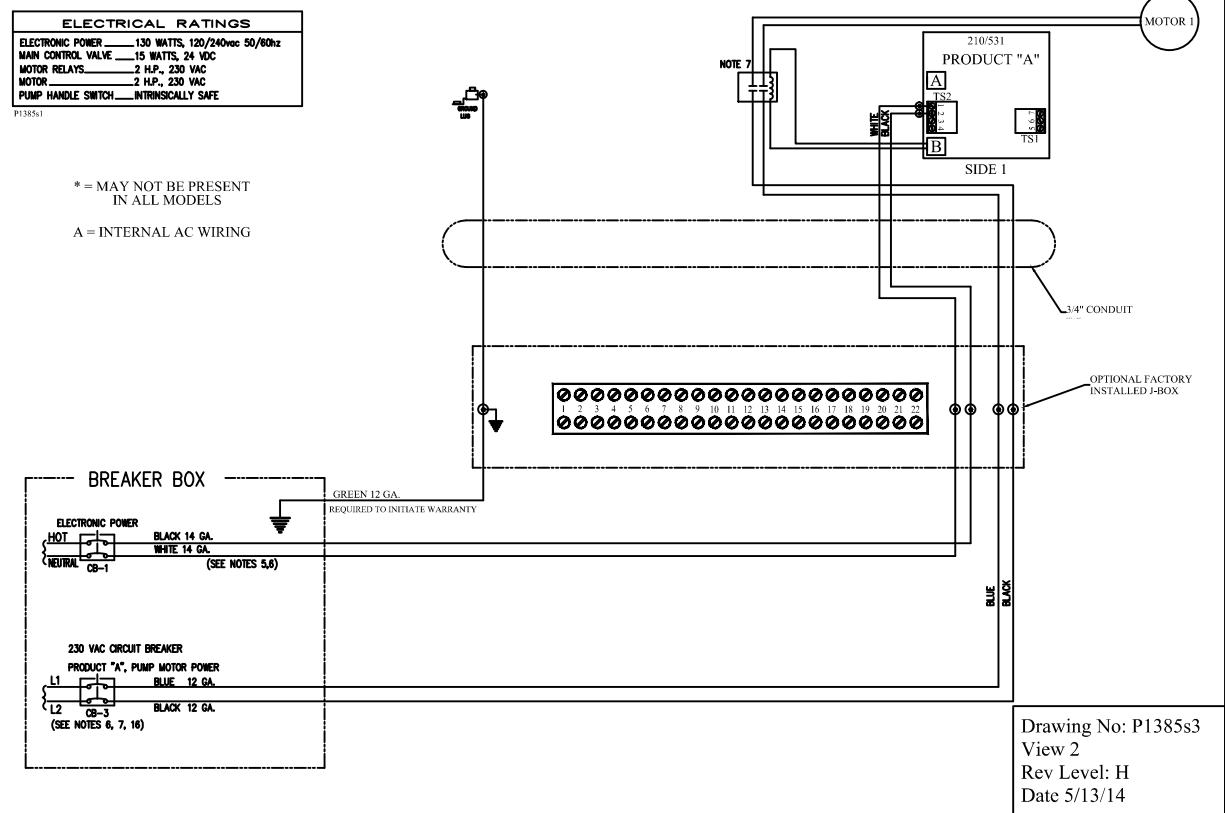
- All wiring must be installed and used in accordance with the national electrical code (NFPA #70, Automotive and marine service code NFPA #30A), state and local electrical codes.
- All wiring gauge is minimum required, stranded wire with THHN insulation must be used. Do not reuse old wire from an existing installation.
- Do not use PVC conduit. Use only rigid metal conduit.
- Pull a Green 12 ga. stranded THHN ground wire through the junction box and wiring trough and secure at grounding post near the terminal strip in the dispenser's electrical enclosure. Terminate the other end at the main electrical service panel ground bar. Do not terminate at the neutral bar of a sub-panel or rely on metal conduit for this ground connection. Each dispenser's grounding post must be within 1 ohm resistance to earth ground potential. Do not use wire nuts on ground circuits, use only compression type connectors. This is required to initiate Bennett's Limited Warranty.

5. Electronic power must be a dedicated circuit. The dispenser is factory wired to accept either 115 VAC or 230 VAC for its operation and may not be changed in the field. (attempting to do this will void the Bennett Limited Warranty) Electronic power for all dispensers at the installation must be wired to the same AC line phase or damage will result to the dispensers.

6. Use 20 Amp neutral breaking circuit breakers which are supplied by the customer.
Breaker Identification:
CB #1 Electronic Power - Hot for electronic power is 115 VAC except for export codes which are 230 VAC.
CB #3 Pump motor product A.
Note: No more than 2 dispensers per breaker. Only 1 dispenser motor per breaker for pump motor circuit.

7. Motors are single voltage (230 VAC). On runs longer than 100 ft use 10ga wire, on runs longer than 200 ft use 8 ga wire.
8. Field connection = ⊕

BIG FUELER SELF CONTAINED MODELS AC POWER & MOTOR CONNECTIONS FOR 3000 SERIES SELF CONTAINED PUMPS WITH 210 OR 531 ELECTRONICS



Drawing No: P1385s3
View 2
Rev Level: H
Date 5/13/14