

等级 CLASS 2	图幅 SIZE D	图号 P4000s2	此图是美国贝特纳公司的财产。借阅者在查阅后要求归还时交回原稿。未经授权不得复制。 THIS PRINT IS THE PROPERTY OF BENNETT PUMP CO. AND LOANED SUBJECT TO RETURN ON DEMAND. MAY NOT BE REPRODUCED WITHOUT OUR CONSENT. 未经授权不得复制或复本。
------------	-----------	------------	---

DIMENSIONS IN MILLIMETERS
[INCHES]

尺寸单位为毫米 [英寸]

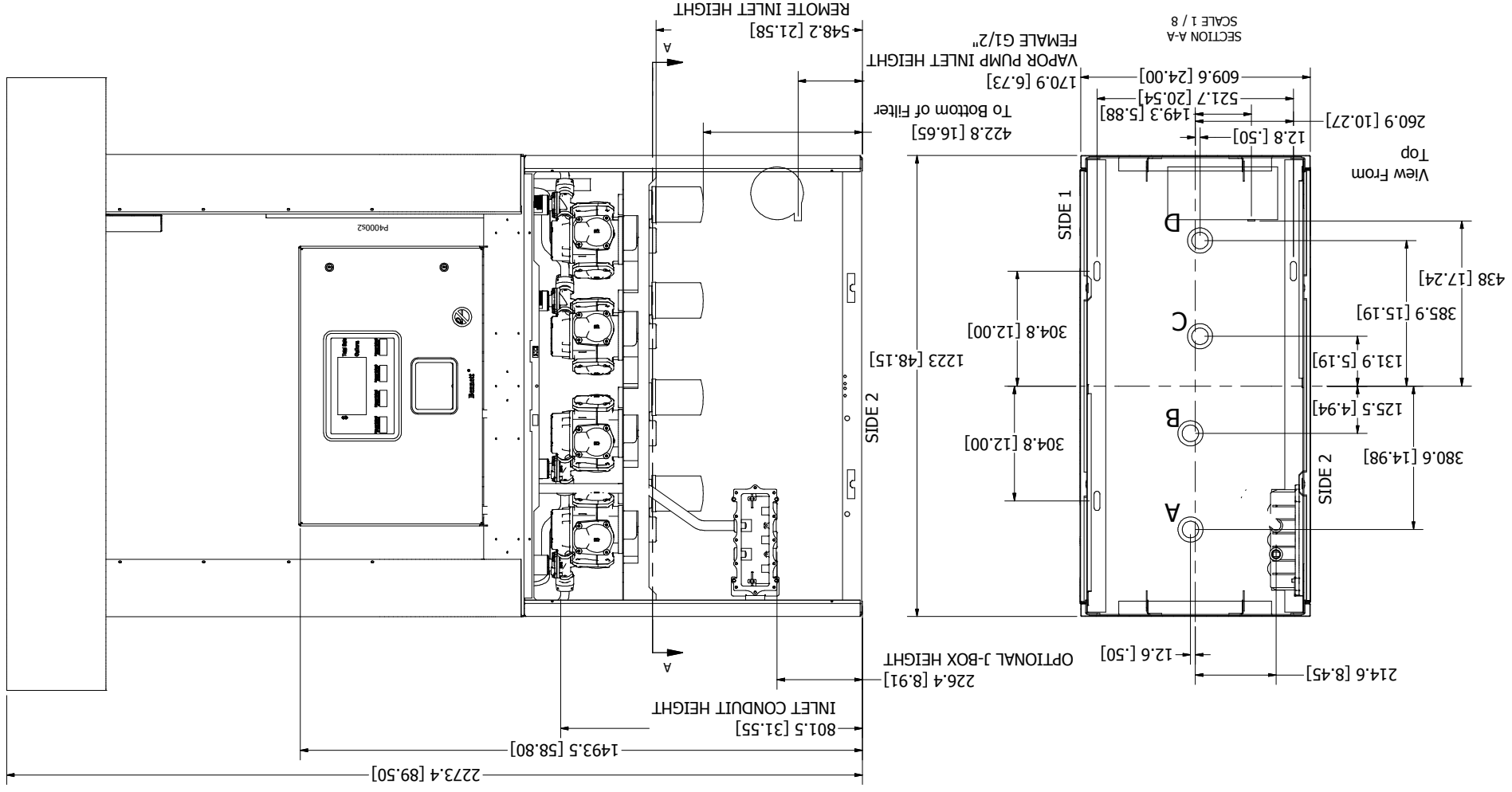
CAUTION: DISPENSERS MUST BE INSTALLED WITH A SUITABLE POWER OPERATED PUMP INCORPORATING A PROVISION FOR EXPANSION RELIEF WHICH WILL RELIEVE AT PRESSURES NOT TO EXCEED 50 LBS PER SQ. INCH. DO NOT USE LINE CHECK VALVE BETWEEN DISPENSER AND OPERATED PUMP UNLESS PROVIDED WITH RELIEF VALVE.

ALL THREADED PIPE JOINTS OF LIQUID HANDLING PIPING MUST BE ASSEMBLED WITH UNDERWRITERS' LISTED GASOLINE RESISTANT PIPE JOINT SEALING COMPOUND. APPLY ON MALE THREADS ONLY.

THIS UNIT MUST BE ANCHORED TO THE ISLAND WITH A MINIMUM OF 4 BOLTS THROUGH THE BASE FRAME. DO NOT SHIM MIDDLE OF RAIL BASE TO BOLT DOWN DISPENSER. SHIM ONLY NEAR BOLTS.

NOTE: INSTALLATIONS TO CONFORM TO NATIONAL, STATE, AND LOCAL CODES

NOTE: IMPACT SAFETY VALVES ARE TO BE INSTALLED WITH SHEAR SECTION IN LINE WITH SURFACE OF ISLAND WITHIN ±3/4" DEPENDING ON VALVE TO BE USED A LONGER OR SHORTER INLET NIPPLE MAY BE REQUIRED. INSTALLER MUST SUPPLY 1 1/2" INLET NIPPLES THREADED FOR THE INLET MANIFOLD (NPT THREADS). CUSTOMER TO PROVIDE PIPE, GROUND JOINT UNION, CONDUIT, AND FITTINGS TO ELECTRICAL AND PLUMBING INLETS. USE ONLY UL LISTED RIGID METAL CONDUIT AND UL LISTED SEALING FITTINGS WITH CONDUCTOR SEALS. UNION NOTE: CUSTOMER SUPPLIED UNIONS USED MUST BE UL LISTED FOR USE WITH FLAMMABLE FLUIDS.



名称: 4K REMOTE	日期: 10/3/14	批准: S BAR	图号: P4000s2
名称: 4K REMOTE	日期: 10/3/14	批准: S BAR	图号: P4000s2
材料: N/A	日期: 4/25/16	修改: SMB	图号: P4000s2
MATERIAL SPEC NO:	日期: 4/25/16	修改: SMB	图号: P4000s2
比例: N/A	日期: 4/25/16	修改: SMB	图号: P4000s2
比例: N/A	日期: 4/25/16	修改: SMB	图号: P4000s2
比例: N/A	日期: 4/25/16	修改: SMB	图号: P4000s2
比例: N/A	日期: 4/25/16	修改: SMB	图号: P4000s2

图号: P4000s2

BENNETT PUMP CO.
SPRING LAKE MI, 49456

BPC P/N: 130831