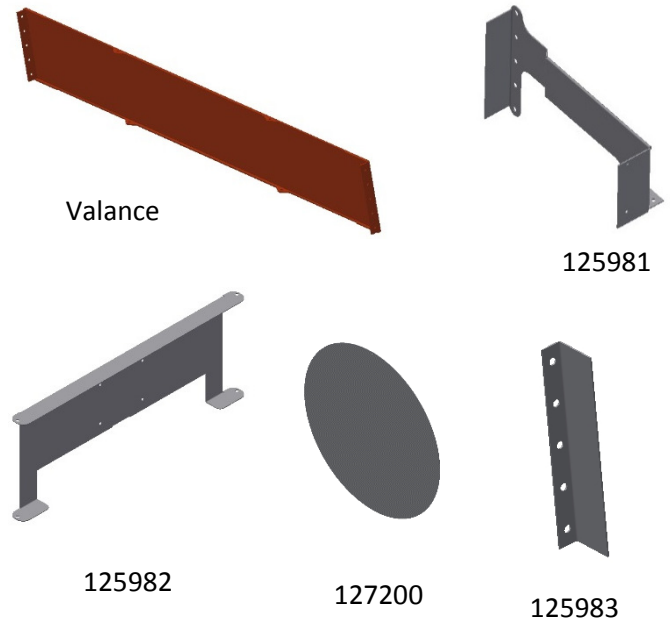


Valance Installation Instructions

Parts Included in these kits:

- 2 Valance – P/N: Varies depending on color and image
- 2 Valance Brackets – P/N: 125981
- 2 Valance Brackets Cross Member – P/N: 125982
- 2 Valance Bracket Support – P/N: 125983
- 18 M8-1.25 bolts - P/N: A479901
- 18 M8 Nylon Insert Lock Nuts – P/N: 111194
- 8 1.0" O.D. x 7/16" I.D. Washers – P/N: A004401
- 8 M6-1.0 bolts – P/N: 110097
- 2 Plate Circle Valance – P/N: Varies
- 8 M4-0.7 Nylon Insert Lock Nuts – P/N: 111182
- 8 3/4" O.D. x 3/16" I.D. Washers – P/N: A256601



Instructions:

1. Unwrap the pieces received with the Kit. Inspect the valance pieces for damage.
2. Use the packaging used in shipping to protect the parts during assembly. Lay out the foam on the ground.
3. Place the two valance halves flat on the ground with the ends touching each other. (See Figure 1.) Make sure the Tops both face the correct direction.
4. Attach the two pieces together. Place the valance bracket on the left side of the joint, and the Valance Bracket Support on the right side of the joint. Secure with 5 pieces of M8 bolt and lock nut.
5. Bend the two pieces up to the point where the other ends meet up. Holding in this position, secure this joint together similar to the other end described in step 4, using the same brackets and fasteners. (See Figure 2.)
6. Lay the assembly down on edge. Secure the cross members to the valance as well as to the Valance Bracket. Use a M8 bolt, Lock nut and washer between each joint to the valance. Use two pieces of M6 bolt to secure the valance bracket to the cross member on each side.
7. Install circle plate to valance after the valances and brackets have been assembled. Use 4 pieces of A256601 washer and 4 pieces of M4-.7 Nut per each side of the valance. Assemble so that the small hole in the circle is oriented above the top of valance. (See Figure 3)
8. Once the assembly is complete, place the assembly on the dispenser and secure with 4 pieces of M6 bolts.



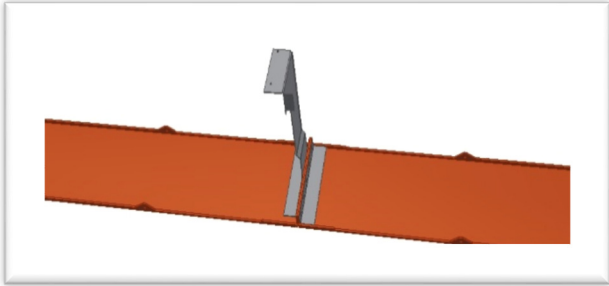


Figure 1

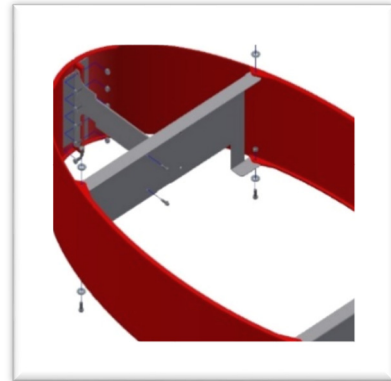


Figure 2

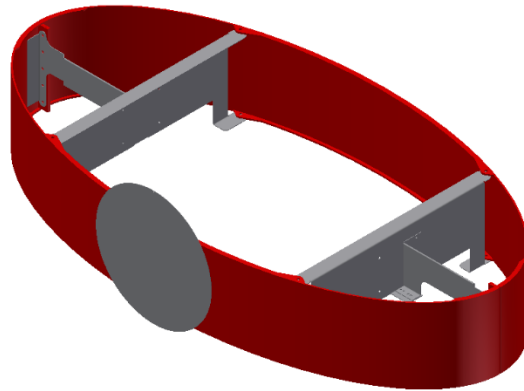


Figure 3