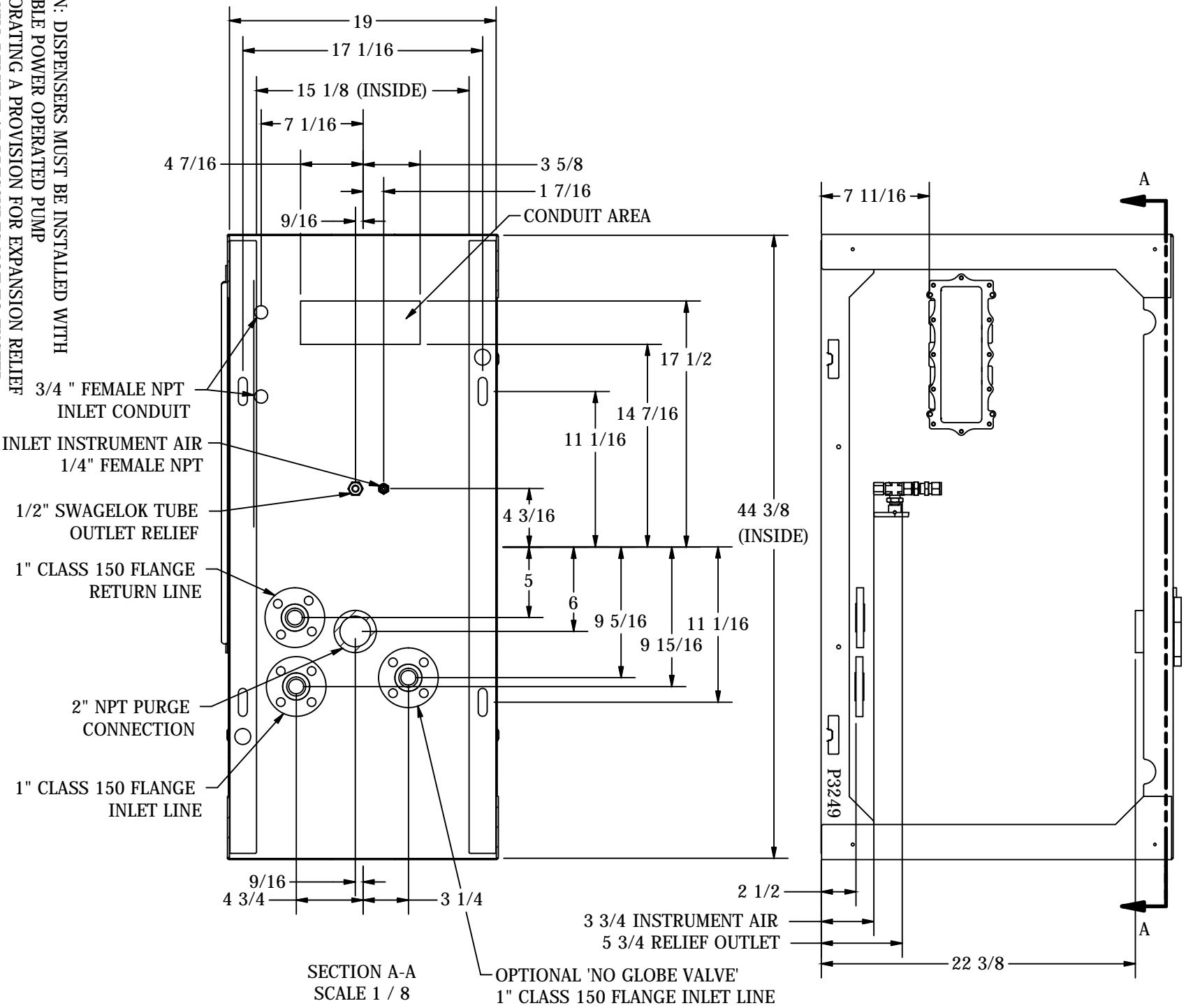


LNG Installation Diagram - Footprint

Note - Installer must print the Installation and Operators manual from the enclosed CD ROM and read and understand the Installation and Operation Instructions before installation.



SECTION A-A
SCALE 1 / 8

OPTIONAL 'NO GLOBE VALVE'
1" CLASS 150 FLANGE INLET LINE

CAUTION: DISPENSERS MUST BE INSTALLED WITH A SUITABLE POWER OPERATED PUMP INCORPORATING A PROVISION FOR EXPANSION RELIEF WHICH WILL RELIEVE AT PRESSURES NOT TO EXCEED 275 LBS. PER SQ. INCH. DO NOT USE LINE CHECK VALVE BETWEEN DISPENSER AND OPERATED PUMP UNLESS PROVIDED WITH RELIEF VALVE.

INLET PIPE TO BE A MINIMUM 1" SCHEDULE 10 304 STAINLESS STEEL.

RETURN PIPE TO BE A MINIMUM 1" SCHEDULE 10 304 STAINLESS STEEL.

RELIEF TUBING SHALL BE A MINIMUM 1/2" 316 STAINLESS STEEL TUBING

INSTRUMENT AIR TUBING SHALL BE A MINIMUM 1/4" 316 STAINLESS STEEL SEAMLESS TUBING

PURGE INLET SHALL BE A MINIMUM 2" METALLIC PIPE WITH INLET IN AN UNCLASSIFIED AREA (MINIMUM 15' FROM ANY CLASSIFIED AREA). CONNECTION IS 2" FEMALE NPT.

PURGE BLOWER MUST PROVIDE AT LEAST 65 CFM TO DISPENSER. REFERENCE BENNETT PART NUMBER 120536.

THIS UNIT MUST BE ANCHORED TO THE ISLAND WITH A MINIMUM OF 4 BOLTS WITH MINIMUM DIAMETER OF 1/2" THROUGH THE BASE FRAME. DO NOT SHIM MIDDLE OF BASE RAILS TO BOLT DOWN DISPENSER. SHIM ONLY NEAR BOLTS.

ANGER: INSTALLATION TO CONFORM TO NATIONAL, STATE AND LOCAL CODES.

INSTALLER MUST SUPPLY INLET TUBES, CUSTOMER TO PROVIDE TUBE, GROUND JOINT UNION, CONDUIT, AND FITTINGS TO ELECTRICAL AND PLUMBING INLETS. USE ONLY UL LISTED RIGID METAL CONDUIT AND UL LISTED SEALING FITTINGS WITH CONDUCTOR SEALS.

CAUTION: DISPENSERS MUST BE INSTALLED WITH PROVISIONS FOR EXPANSION RELIEF, WHICH WILL RELIEVE AT PRESSURES NOT EXCEEDING 275 PSI. DO NOT USE LINE CHECK VALVE BETWEEN DISPENSER AND TANK UNLESS PROVIDED WITH RELIEF VALVE.

119713
P3249s1
REV C