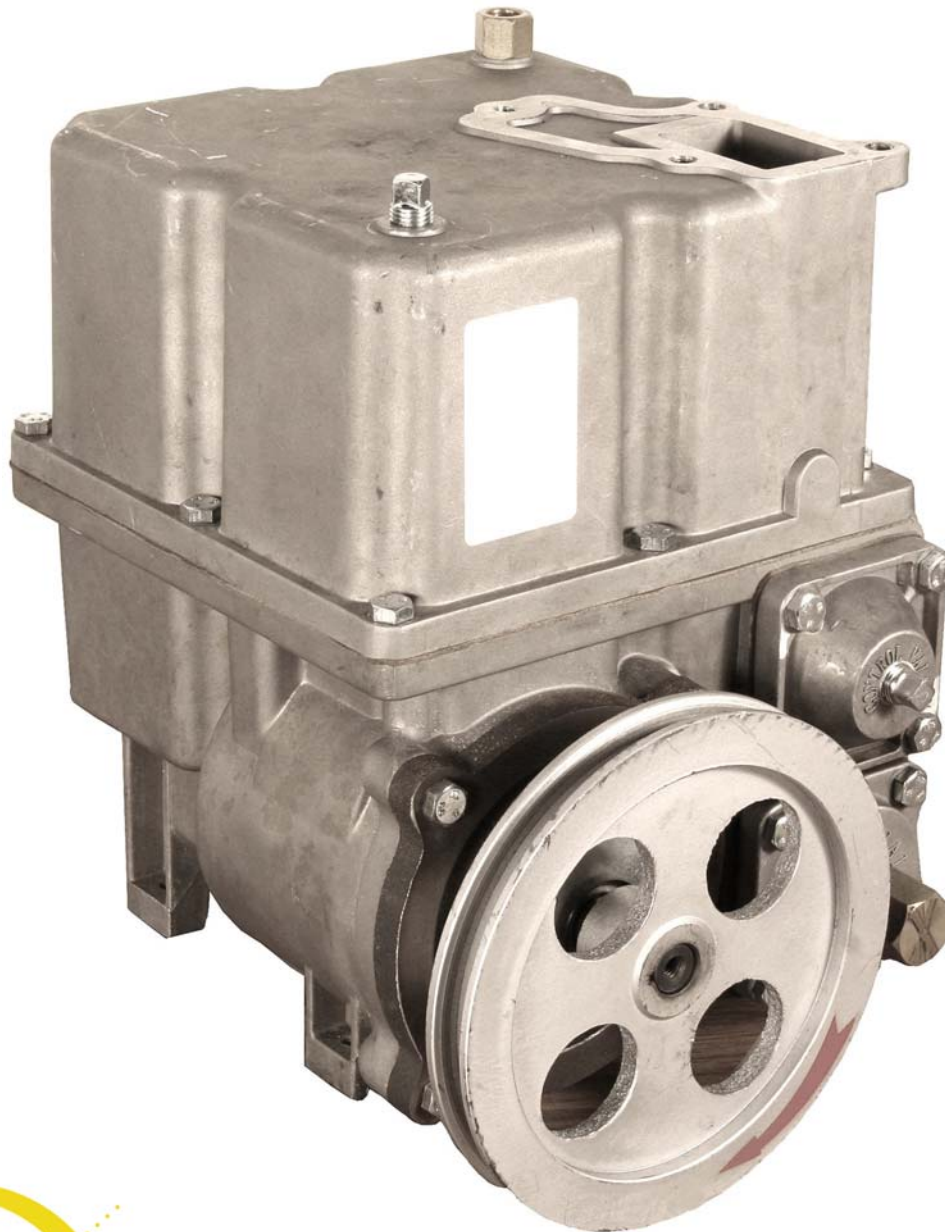


T140 Series Pumping Unit

High Flow Pumping Unit



PENDING APPROVALS
OIML & ATEX (Europe) and UL(US)



Jim Biesecker, Component Business Manager
Direct: 231.798.262 ~ **Fax:** 231.799.6200 ~ **Cell:** 616.638.3616
www.BennettPump.com ~ JBiesecker@BennettPump.com

T140 Series Pumping Unit

PERFORMANCE

- Maximum Flow: 140 Liter / Min (37 Gal.)
- Maximum Operating Pressure: 3 Bar (43 PSI)
- Power Requirements @ Maximum Flow & Pressure: 1.5 KW (2 H.P.)
- Self Priming: 3 Meter (10') Lift Dry, 8 Meter (26') Lift Wet
- Minimum Required Lift: 0.3 Meter (1')
- Operating Noise Level: <83 dBA @ 1 Meter (3.3')
- OIML Air Separation: < 1.0% Error @ 100% Flow
- Fuels : Diesel Fuels & Gasoline Blends to 15%
- Operating Temperature Range: -40° C to 55° C (-40° F to 131° F)
- 1 1/2" NPTF Threaded Inlet Port
- Flanged Meter Outlet Manifold

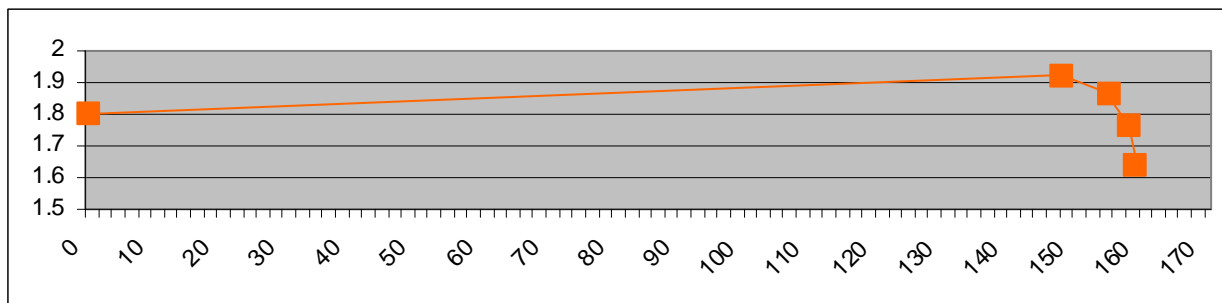
FEATURES

- Adjustable By-Pass Valve—Range 2 to 3.5 Bar (30 to 50 PSI)
- Internal (cleanable) Stainless Steel 40 Mesh Strainer
- Internal Check Valve
- Integral Air Separation Device, NO AIR SWITCH Required
- Atmospheric Vent w/ Overflow Shut Off Valve

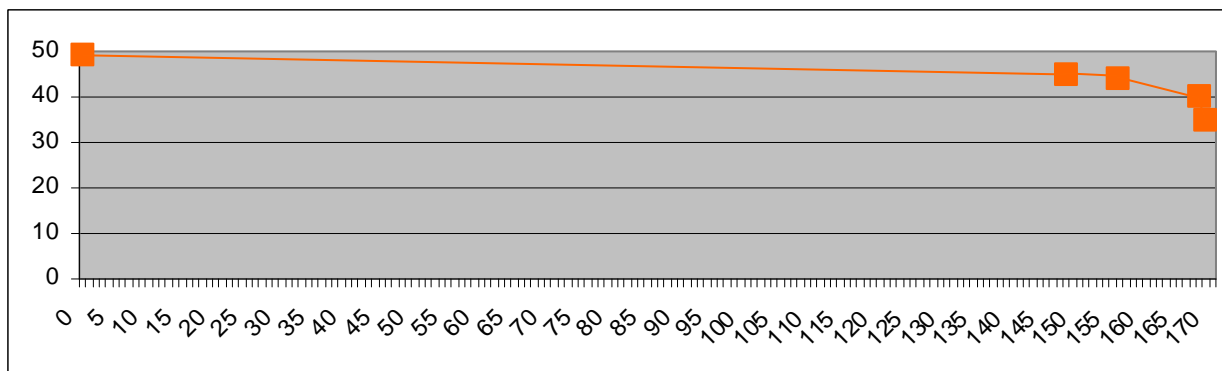
OPTIONS

- High Flow Meter w/ Integral Pulse Output — 107850
- 1 1/2" Meter Outlet Manifold w/ Satellite Port, Right Side — 107893
- 1 1/2" Meter Outlet Manifold w/ Satellite Port, Left Side — 109317
- 1 1/2" NPTF Loose Inlet Flanged Adapter w/ Gasket — 111503

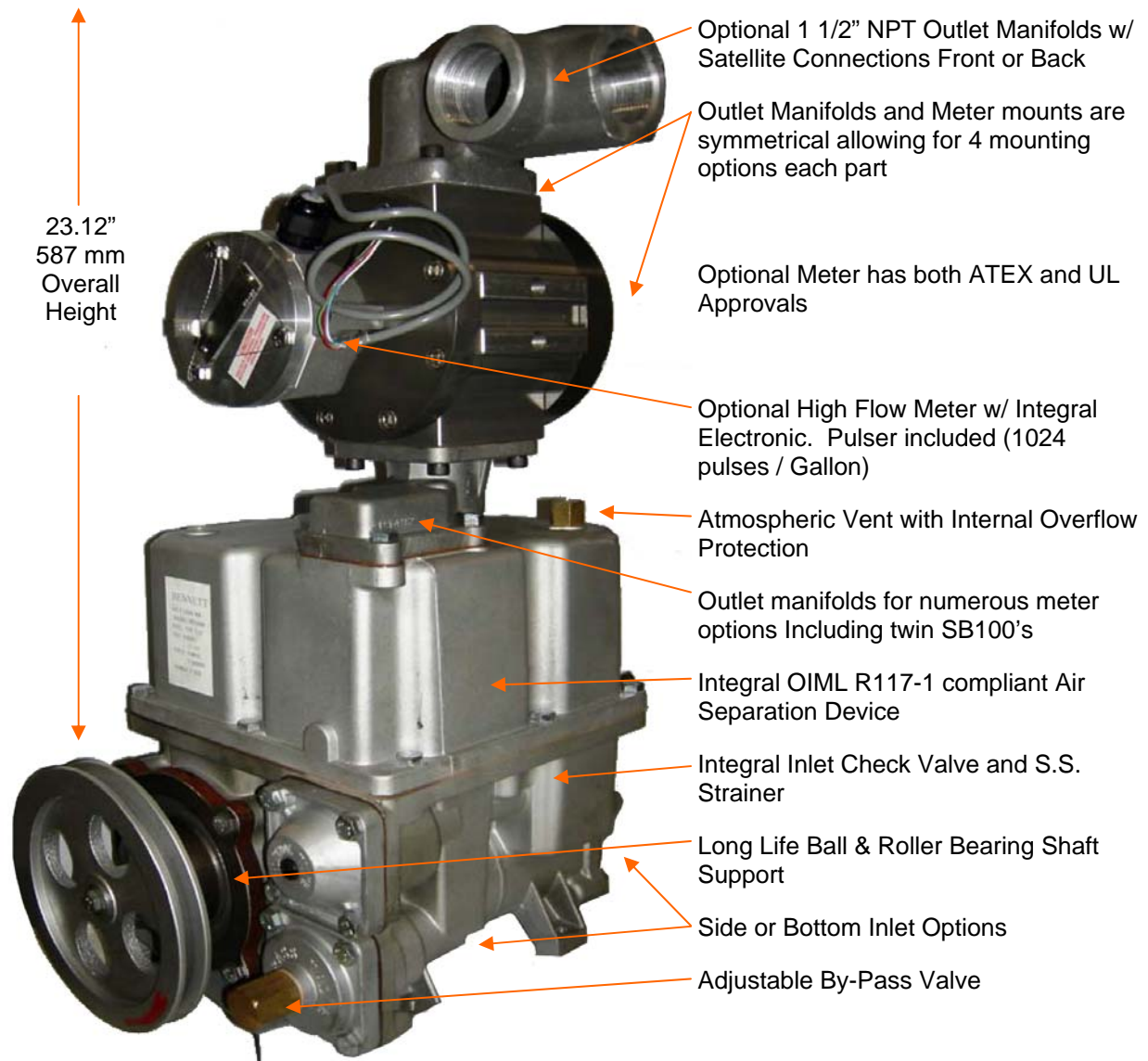
**Horsepower (HP) vs. Flow (LPM)
Preliminary Test Data**



**Pressure (PSI) vs. Flow (LPM)
Preliminary Test Data**



T140 Series Pumping Unit



T140 Series Pumping Unit

