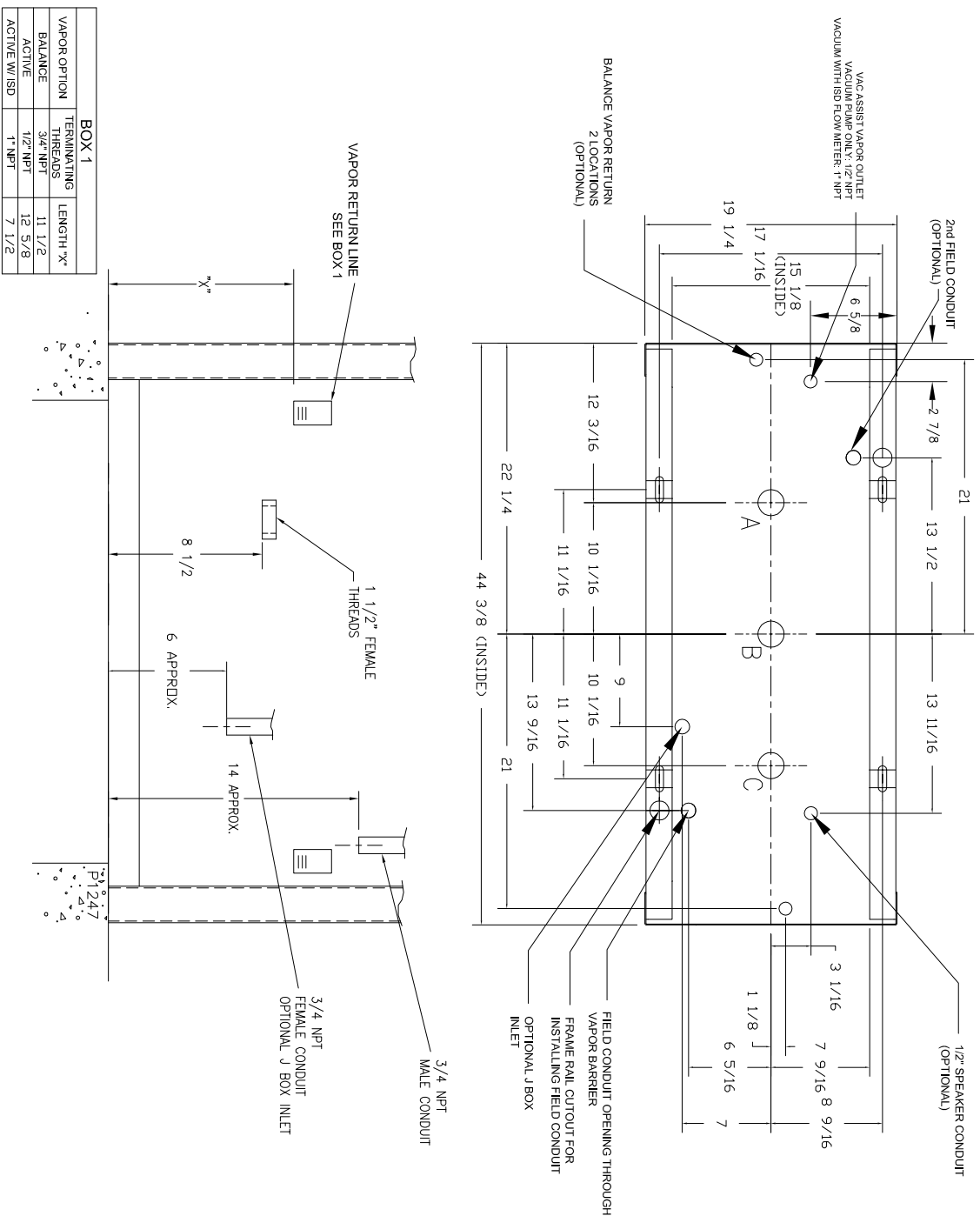


### Pacific Installation Diagram - Footprint

Note - Installer must print the Installation and Operators manual from the enclosed CD-ROM and read and understand the Installation and Operation Instructions before installation.



BOX 1	
VAPOR OPTION	TERMINATING THREADS
BALANCE	3/4" NPT
ACTIVE	1/2" NPT
ACTIVE W/ ISD	1" NPT
LENGTH "X"	
BALANCE	11 1/2
ACTIVE	12 5/8
ACTIVE W/ ISD	7 1/2

**CAUTION:** DISPENSERS MUST BE INSTALLED WITH A SUITABLE POWER OPERATED PUMP INCORPORATING A PROVISION FOR EXPANSION RELIEF WHICH WILL RELIEVE AT PRESSURES NOT TO EXCEED 50 LBS. PER SQ. INCH. DO NOT USE LINE CHECK VALVE BETWEEN DISPENSER AND OPERATED PUMP UNLESS PROVIDED WITH RELIEF VALVE.

INLET PIPING SHALL BE A MINIMUM SCHEDULE 40 STEEL PIPE WITH UL LISTED UNION INSTALLED PRIOR TO INSTALLATION INTO THE DISPENSER INLET. ALL JOINTS TO BE MADE USING CLASSIFIED PIPE JOINT SEALING COMPOUND.

THIS UNIT MUST BE ANCHORED TO THE ISLAND WITH A MINIMUM OF 4 BOLTS WITH MINIMUM DIAMETER OF 1/2" THROUGH THE BASE FRAME. DO NOT SHIM MIDDLE OF BASE RAILS TO BOLT DOWN DISPENSER. SHIM ONLY NEAR BOLTS.

**CAUTION:** DISPENSERS MUST BE INSTALLED WITH PROVISIONS FOR EXPANSION RELIEF WHICH WILL RELIEVE AT PRESSURES NOT EXCEEDING 50 PSI (345 MPa). DO NOT USE LINE CHECK VALVE BETWEEN DISPENSER AND TANK UNLESS PROVIDED WITH RELIEF VALVE.